

Microsoft

Exam Questions MS-721

Collaboration Communications Systems Engineer



NEW QUESTION 1

- (Exam Topic 1)

You need to assign a phone number to User1 to meet the technical requirements.

How should you complete the command? To answer, select the appropriate options in the answer area. NOTE: Each correct selection is worth one point.

▼

Set-CsUser

Set-CsOnlineVoiceUser

Update-MgTeamMember

Update-MgUserProfilePhone

`-Identity User1@Litwareinc.com`

▼

-LineURI

-OnPremLineURI

-TelephoneNumber

`"tel:+61370105550" -EnterpriseVoiceEnabled
$true -ErrorAction Stop`

- A. Mastered
- B. Not Mastered

Answer: A

Explanation:

Graphical user interface, text, application, email Description automatically generated

Reference:

<https://docs.microsoft.com/en-us/powershell/module/skype/set-csuser?view=skype-ps>

NEW QUESTION 2

- (Exam Topic 1)

You need to connect the analog intercoms to Teams Phone.

Which two actions should you perform? Each correct answer presents part of the solution. NOTE: Each correct selection is worth one point.

- A. Create a trusted application endpoint for Teams.
- B. Create a resource account for each intercom.
- C. Register the ATAs with a Teams-certified SBC.
- D. Create a configuration profile for IP phones.
- E. Enable Direct Routing to a Teams-certified SBC.

Answer: CE

Explanation:

Reference:

<https://docs.microsoft.com/en-us/microsoftteams/direct-routing-analog-devices>

NEW QUESTION 3

- (Exam Topic 2)

You need to migrate a Vancouver facility user named jsmith from Skype for Business Server to Teams. Which three actions should you perform in sequence? To answer, move the appropriate actions from the list of actions to the answer area and arrange them in the correct order.

Actions

Answer Area

Run the following command.

```
Move-CsUser -Identity  
jsmith@contoso.com -Target  
sipfed.online.lync.com
```

Run the following command.

```
Grant-CsOnlineVoiceRoutingPolicy  
-identity jsmith@contoso.com  
-PolicyName Vancouver
```

Assign the Microsoft 365 Phone
System license to jsmith.

Run the following command.

```
Set-CsOnlineUser  
-EnableEnterpriseVoice $true  
-identity jsmith@contoso.com
```

Assign the Microsoft 365 Audio
Conferencing license to jsmith.



- A. Mastered
- B. Not Mastered

Answer: A

Explanation:
Table Description automatically generated with medium confidence
Reference:
<https://docs.microsoft.com/en-us/skypeforbusiness/hybrid/move-users-from-on-premises-to-teams> <https://docs.microsoft.com/en-us/skypeforbusiness/hybrid/move-users-from-on-premises-to-teams> <https://docs.microsoft.com/en-us/microsoftteams/direct-routing-voice-routing>

NEW QUESTION 4
- (Exam Topic 2)
You need to assign the correct licenses to a sales team manager in the New York office who is scheduled to migrate from Skype for Business Server to Teams. Which three licenses should you assign? To answer, select the licenses in the answer area. NOTE: Each correct selection is worth one point.

United States 

Licenses (0)

☐ **Common Area Phone**
24 of 25 licenses available

☐ **Communications Credits**
Unlimited licenses available

☐ **Microsoft 365 Audio Conferencing**
1378 of 1451 licenses available

☐ **Microsoft 365 Domestic Calling Plan**
30 of 30 licenses available

☐ **Microsoft 365 Phone System**
4 of 70 licenses available

☐ **Microsoft 365 Phone System – Virtual User**
12 of 25 licenses available

☐ **Office 365 E3**
1 of 2 licenses available

- A. Mastered
- B. Not Mastered

Answer: A

Explanation:

Graphical user interface, text, application Description automatically generated

Reference:

<https://docs.microsoft.com/en-us/microsoftteams/what-are-communications-credits>

NEW QUESTION 5

- (Exam Topic 3)

You have a Microsoft Teams Phone deployment that uses Direct Routing. You need to implement Local Media Optimization.

In the Microsoft Teams admin center, you configure the external trusted IP addresses and define the network regions, network sites, and network subnets.

What should you do next?

- A. Define a voice route.
- B. Assign Session Border Controllers (SBCs) to sites.
- C. Create a trunk translation rule.
- D. Modify the default emergency calling policy

Answer: B

Explanation:

Reference:

<https://docs.microsoft.com/en-us/microsoftteams/direct-routing-media-optimization-configure>


NEW QUESTION 6

- (Exam Topic 3)

You have a Microsoft Teams Phone deployment. You are deploying Direct Routing.

All users have a SIP URI in the format of user@contoso.com. The Session Border Controller (SBC) is named sbc.voice.contoso.com.

When troubleshooting errors on the SBC, you receive the warning shown in the following exhibit.

 **No SIP Options.**

The Session Border Controller exists in our database (your administrator created it using the command New-CSOnlinePSTNGateway). It's configured to send SIP options but we never saw SIP options coming back from this SBC.

What is a possible cause of the issue?

- A. The firewall blocks outbound traffic on port 443 to Microsoft Teams.
- B. The firewall blocks traffic to the signaling port on the SBC.
- C. TLS 1.2 is enabled on the SBC.
- D. Microsoft 365 Phone System licenses are not assigned to the users.

Answer: B

Explanation:

Reference:

<https://docs.microsoft.com/en-us/microsoftteams/troubleshoot/phone-system/direct-routing/sip-options-tls-certif>

NEW QUESTION 7

- (Exam Topic 3)

You have two users named User1 and User2.

You need to configure User2 as a call delegate for User1. The solution must meet the following requirements:

- Minimize disruptions to User1.
- Prevent User2 from placing calls on behalf of User1.
- Prevent User2 from modifying the settings of User1.

Which three actions should you perform in sequence? To answer, move the appropriate actions from the list of actions to the answer area and arrange them in the correct order.

Actions

Instruct User1 to sign in to the Microsoft Teams client, establish a remote session to his computer, and then configure the delegation settings in the Teams client.

For User2, set Permission to **Make and receive calls**.

From the Microsoft Teams admin center, select **Voice**, select **Phone numbers**, and then select the phone number of User1.

From Users in the Microsoft Teams admin center, open the settings of User1, and then select the **Voice** tab.

From Users in the Microsoft Teams admin center, open the settings of User2, and then select the **Voice** tab.

For User2, set Permission to **Receive calls**, and then set Allow changing call settings to **Off**.

Answer Area

>

<

<

>

- A. Mastered
- B. Not Mastered

Answer: A

Explanation:

Actions

Instruct User1 to sign in to the Microsoft Teams client, establish a remote session to his computer, and then configure the delegation settings in the Teams client.

For User2, set Permission to **Make and receive calls**.

From the Microsoft Teams admin center, select **Voice**, select **Phone numbers**, and then select the phone number of User1.

From Users in the Microsoft Teams admin center, open the settings of User1, and then select the **Voice** tab.

From Users in the Microsoft Teams admin center, open the settings of User2, and then select the **Voice** tab.

For User2, set Permission to **Receive calls**, and then set Allow changing call settings to **Off**.

Answer Area

From the Microsoft Teams admin center, select **Voice**, select **Phone numbers**, and then select the phone number of User1.

For User2, set Permission to **Receive calls**, and then set Allow changing call settings to **Off**.

Instruct User1 to sign in to the Microsoft Teams client, establish a remote session to his computer, and then configure the delegation settings in the Teams client.

NEW QUESTION 8

- (Exam Topic 3)

Note: This question is part of a series of questions that present the same scenario. Each question in the series contains a unique solution that might meet the stated goals. Some question sets might have more than one correct solution, while others might not have a correct solution. After you answer a question in this section, you will NOT be able to return to it. As a result, these questions will not appear in the review screen.

Passing Certification Exams Made Easy

visit - <https://www.surepassexam.com>

You need to create a new call queue to route calls to support agents. The support agents must be able to see their call queue history and the shared transcribed voicemail. The solution must minimize administrative effort.

Solution: You configure the call queue to use a team and a channel. Does this meet the goal?

- A. Yes
- B. No

Answer: A

Explanation:

Reference:

<https://regroove.ca/stellark/2021/09/15/redirect-teams-auto-attendant-voicemail-to-a-channel-updated-method/>

NEW QUESTION 9

- (Exam Topic 3)

Your company has offices in London and Vancouver

The company has a Teams Phone deployment that uses Calling Plans. The London office contains a user named User1.

User1 moves from the London office to the Vancouver office.

You need to update the phone number and emergency location of User1 to match the new office. What should you do first?

- A. Run New-CsTeamsEmergencyCallingPolicy -Identity Vancouver.
- B. Modify the current Usage location for User1.
- C. Run Grant-CsTeamsEmergencyCallingPolicy -Identity Vancouver.
- D. Add a new emergency location for User1.

Answer: D

Explanation:

Assign an emergency location

You can assign emergency locations for your organization in the Microsoft Teams admin center or by using PowerShell.

To assign an emergency location, be sure the location, users, and phone numbers are all in the same country. Using the Microsoft Teams admin center

- In the left navigation of the Microsoft Teams admin center, click Locations > Emergency addresses.
- Click Add.
- Enter a name and description for the location.
- Select the country or region, and then enter the address.
- If the address isn't found and you want to manually edit the address, turn on Edit the address manually.
- Click Save.

Reference:

<https://learn.microsoft.com/en-us/microsoftteams/add-change-remove-emergency-location-organization>

NEW QUESTION 10

- (Exam Topic 3)

Your company uses configuration profiles to manage Microsoft Teams-certified IP phones. The Standard configuration profile is applied to the IP phones.

The help desk receives reports that several user phones fail to lock automatically after the timeout period. You need to verify whether the configuration profile is applied to the problematic phones.

Solution: From Devices in the Microsoft Teams admin center, you locate each affected phone and review the settings on the Details tab.

Does this meet the goal?

- A. Yes
- B. No

Answer: B

NEW QUESTION 10

- (Exam Topic 3)

Your company deploys 200 Microsoft Teams Rooms on Windows systems.

You are evaluating whether to purchase the Microsoft Teams Rooms Premium license for the rooms. Which two actions require the Microsoft Teams Rooms Premium license? Each correct answer presents a complete solution.

NOTE: Each correct selection is worth one point

- A. Download device logs.
- B. View peripheral health.
- C. Get reporting insights into room usage and participant count
- D. Postpone updates until a certain date.
- E. Modify the Direct guest jam settings

Answer: BC

Explanation:

Reference: <https://docs.microsoft.com/en-us/microsoftteams/rooms/microsoft-teams-rooms-premium>

NEW QUESTION 11

- (Exam Topic 3)

You need to implement Local Media Optimization.

- A. 132.245.0.0/16 and 40.104.0.0/15

- B. 10.10.0.0/24 and 10.11.0.0/24
- C. 8.8.8.8/32 and 4.4.2.2/32
- D. 52.112.0.0/14 and 52.120.0.0/14

Answer: D

Explanation:

Reference:
<https://docs.microsoft.com/en-us/microsoftteams/direct-routing-plan>

NEW QUESTION 15

- (Exam Topic 3)

You have a Microsoft Teams Phone deployment
You use Direct Routing with a Survivable Branch Appliance (SBA) at a site. The site experiences an extended internet outage.
Which three PSTN calling scenarios are possible during the outage? Each coned answer presents a complete solution.
NOTE: Each correct selection is worth one point.

- A. dynamic emergency calling
- B. outbound PSTN calls
- C. inbound PSTN calls
- D. call transfer of PSTN calls
- E. hold and resume of PSTN calls

Answer: ABC

Explanation:

Reference:
<https://docs.microsoft.com/en-us/skypeforbusiness/plan-your-deployment/enterprise-voice-solution/enterprise-v>

NEW QUESTION 19

- (Exam Topic 3)

Your company has an on-premises deployment of Microsoft Skype for Business Server 2015 with CU8 that Is configured for hybrid connectivity
You are migrating to Microsoft Teams Phone. A Direct Routing trunk is used for PSTN connectivity. The company requires that phone number assortments be performed in Active Directory.
You plan to create a call queue that will service users both on-premises and in the cloud.
You need to create and assign a resource account for the call queue. The call queue must be able to teach users regardless of which platform they are on.
Which three actions should you perform in sequence? To answer, move the appropriate actions from the list of actions to the answer area and arrange them in the correct order.

Actions

From Microsoft Teams PowerShell, run the set-CsOnlineApplicationInstance cmdlet and assign a phone number to the resource account.

From the Skype for Business Server Management Shell, run the New-CsHybridApplicationEndpoint cmdlet and specify the -LineURI parameter.

From Org-wide settings in the Microsoft Teams admin center, select **Resource accounts**, and then select **Add**.

From the Microsoft 365 admin center, assign a Microsoft 365 Domestic Calling Plan license to the account.

From the Microsoft 365 admin center, assign a Microsoft 365 Phone System - Virtual User

Assign the resource account to the call queue during the call queue setup.

Answer Area

- A. Mastered
- B. Not Mastered

Answer: A

Explanation:

Actions

From Microsoft Teams PowerShell, run the set-CsOnlineApplicationInstance cmdlet and assign a phone number to the resource account.

From the Skype for Business Server Management Shell, run the New-CsHybridApplicationEndpoint cmdlet and specify the -LineURI parameter.

From Org-wide settings in the Microsoft Teams admin center, select **Resource accounts**, and then select **Add**.

From the Microsoft 365 admin center, assign a Microsoft 365 Domestic Calling Plan license to the account.

From the Microsoft 365 admin center, assign a Microsoft 365 Phone System - Virtual User

Assign the resource account to the call queue during the call queue setup.

Answer Area

NEW QUESTION 24

- (Exam Topic 3)

Your company uses configuration profiles to manage Microsoft Teams-certified IP phones. The Standard configuration profile is applied to the IP phones.
The help desk receives reports that several user phones fail to lock automatically after the timeout period. You need to verify whether the configuration profile is

applied to the problematic phones.

Solution: From Users in the Microsoft Teams admin center, you locate each affected user and review the settings on the Voice tab.

Does this meet the goal?

- A. Yes
- B. No

Answer: A

NEW QUESTION 28

- (Exam Topic 3)

Note: This question is part of a series of questions that present the same scenario. Each question in the series contains a unique solution that might meet the stated goals. Some question sets might have more than one correct solution, while others might not have a correct solution.

After you answer a question in this section, you will NOT be able to return to it. As a result, these questions will not appear in the review screen.

Your company uses configuration profiles to manage Microsoft Teams-certified IP phones. The Standard configuration profile is applied to the IP phones.

The help desk receives reports that several user phones fail to lock automatically after the timeout period. You need to verify whether the configuration profile is applied to the problematic phones.

Solution: From Device in the Microsoft Teams admin center, you select IP Phones, select the Configuration profiles tab, select Standard Phone Policy, and select Assigned devices.

Does this meet the goal?

- A. Yes
- B. No

Answer: B

NEW QUESTION 32

- (Exam Topic 3)

You are optimizing a network to better support voice and collaboration workloads in Microsoft Teams. When the users are at a specific corporate site, you need to prevent the users from adding video during calls. Solution: You run New-CsTeams-MeetingPolicy and set the -MediaBitRateKb parameter set to 1.

Does this meet the goal?

- A. Yes
- B. No

Answer: B

NEW QUESTION 36

- (Exam Topic 3)

You have an analog phone system.

You plan to migrate to Microsoft Teams Phone.

You need to recommend devices for common area phones that any user can use. The solution must meet the following requirements;

- Can access the Teams directory for dial by name.
- Can be administered remotely.
- Can place and pick up calls.
- Support hot desking.
- Minimize costs.

Which type of devices should you recommend?

- A. Microsoft-certified 3PIP handsets
- B. Microsoft Teams-certified handsets
- C. Microsoft Teams Rooms devices
- D. Microsoft-certified headsets
- E. the existing analog handsets

Answer: C

NEW QUESTION 37

- (Exam Topic 3)

You are migrating users from Microsoft Skype for Business to Microsoft Teams.

You plan to create an auto attendant that can be used by all the users during the migration. You need to create the resource account for the auto attendant

What should you use?

- A. the Resource accounts node in the Microsoft Teams admin center
- B. the Users node in the Microsoft 365 admin center
- C. the New-CsHybridApplicationEndpoint cmdlet
- D. the New-CsOnlineApplicationEndpoint cmdlet
- E. the New-CsOnlineApplicationInstance cmdlet

Answer: A

NEW QUESTION 40

- (Exam Topic 3)

You have a Microsoft Teams Phone deployment.

You are configuring emergency services for Direct Routing.

You need to notify a group of users when an emergency number is dialed. What should you configure in the Microsoft Teams admin center?

- A. an emergency calling policy

- B. a calling policy
- C. an emergency call routing policy
- D. a voice routing policy

Answer: A

Explanation:

Reference:

<https://docs.microsoft.com/en-us/microsoftteams/manage-emergency-calling-policies>

NEW QUESTION 43

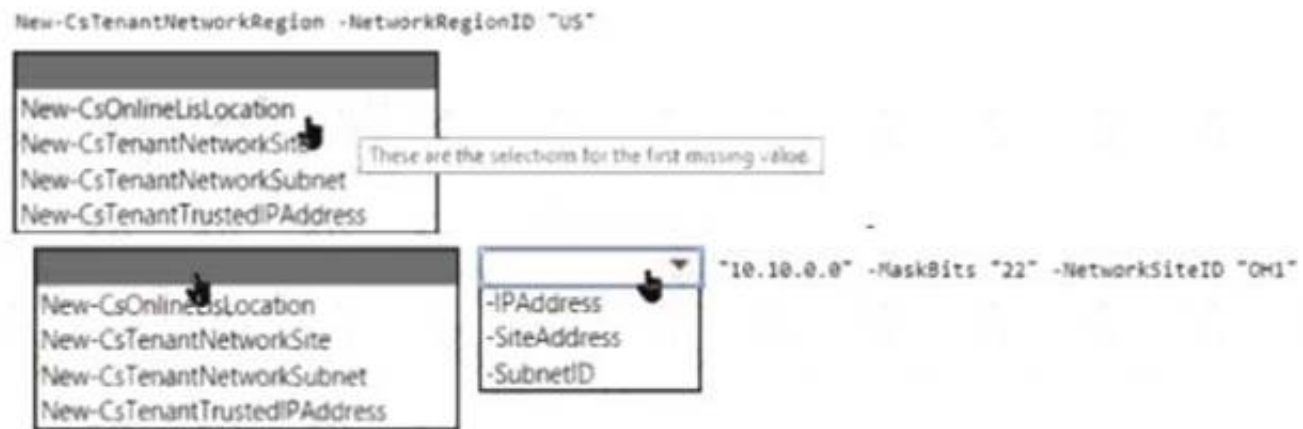
- (Exam Topic 3)

You have a Microsoft Teams Phone deployment You are implementing dynamic emergency calling.

You need to define a network topology for the implementation.

How should you complete the PowerShell script? To answer, select the appropriate options in the answer area. NOTE: Each correct selection a worth one point

Answer Area

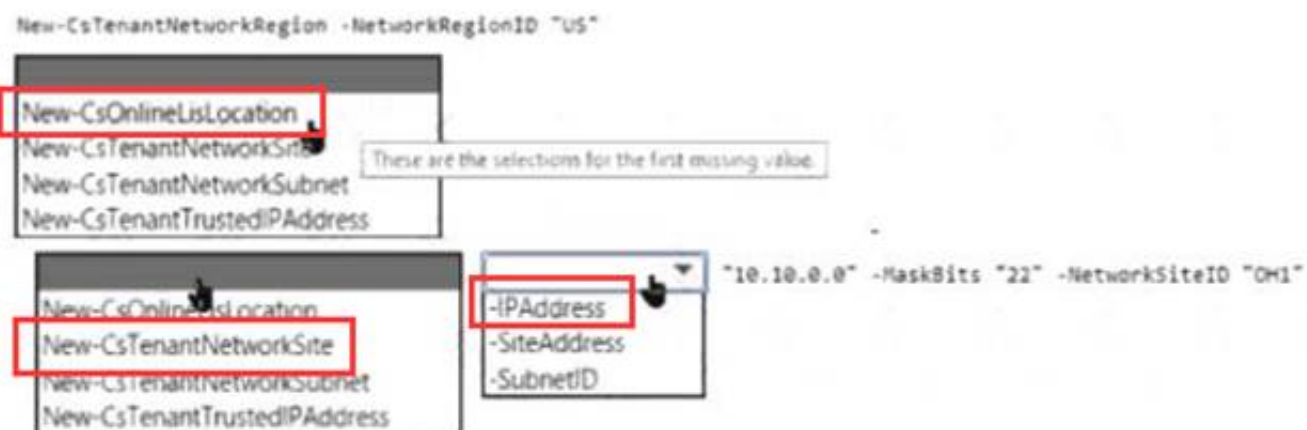


- A. Mastered
- B. Not Mastered

Answer: A

Explanation:

Answer Area



NEW QUESTION 45

- (Exam Topic 3)

You have a Microsoft Teams Phone deployment.

You need to implement Local Media Optimization for Direct Routing users at a site. Users at the site frequently perform the following actions:

- A) Park calls.
- B) Transfer calls to other users.
- C) Escalate calls to conference calls.
- D) Place calls on hold.

Which action will be affected by implementing Local Media Optimization?

- A. Park calls.
- B. Place calls on hold.
- C. Transfer calls to other users.
- D. Escalate calls to conference calls

Answer: C

Explanation:

Reference:

<https://docs.microsoft.com/en-us/microsoftteams/direct-routing-media-optimization#known-issues>

NEW QUESTION 46

- (Exam Topic 3)

Your company has a Teams Phone deployment.

The network team at the company completes a local internet breakout for Teams traffic.

To validate the configuration, you review the Call Debug log shown in the following exhibit.

Connectivity_TransportBytesSent	3324
Connectivity_TransportMode	2
Connectivity_TransportPktsReceived	18
Connectivity_TransportPktsSent	20
Connectivity_BaseAddress	192.168.1.216:50008
Connectivity_LocalAddress	192.168.1.216:50011
Connectivity_LocalSite	120.17.163.212:1883
Connectivity_RemoteAddress	52.113.88.214:49704
Connectivity_RemoteSite	52.113.88.214:49704
IsRetargeted	0

Use the drop down menus to select the answer choice that completes each statement based on the information presented in the graphic.
NOTE: Each correct selection is worth one point.

Answer Area

The WAN IP address for the call source is [answer choice].

▼

52.113.88.214

120.17.163.212

192.168.1.216

The WAN port for call destinations is [answer choice].

▼

1883

49704

50008

50011

- A. Mastered
- B. Not Mastered

Answer: A

Explanation:

Answer Area

The WAN IP address for the call source is [answer choice].

▼

52.113.88.214

120.17.163.212

192.168.1.216

The WAN port for call destinations is [answer choice].

▼

1883

49704

50008

50011

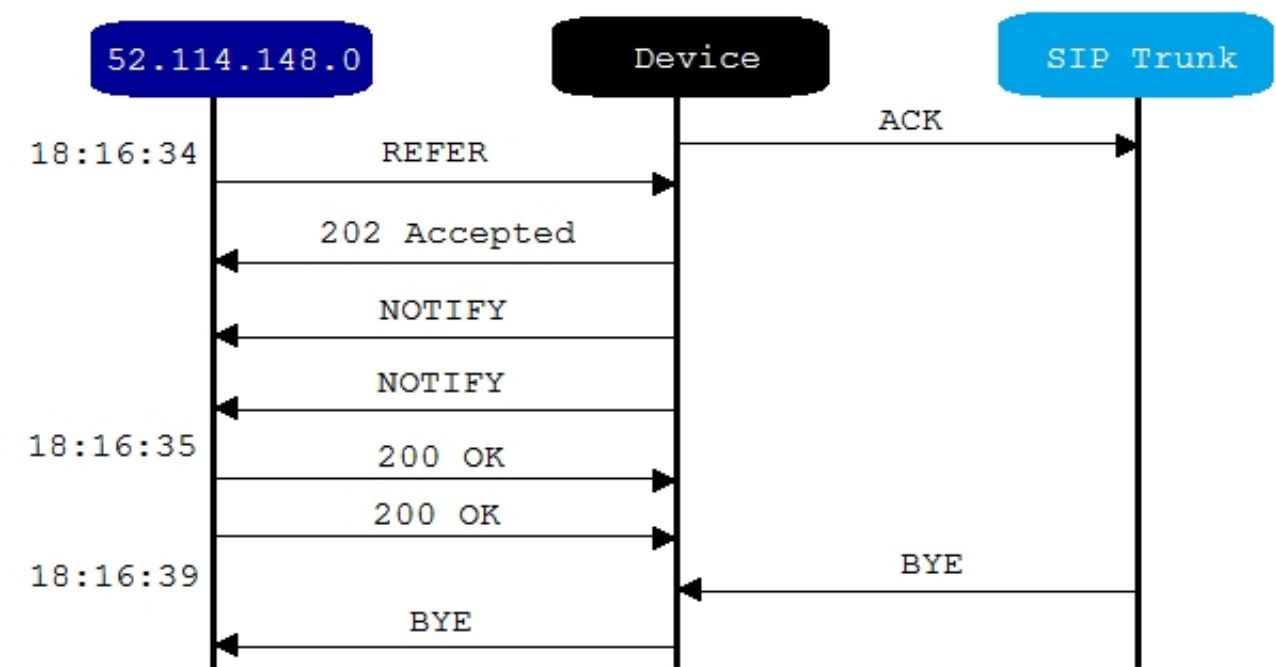
NEW QUESTION 47

- (Exam Topic 3)

Your company has a Microsoft Teams Phone deployment that uses Direct Routing and a single carrier. You deploy a new Session Border Controller (SBC) that shows as healthy in the Microsoft Teams admin center.

You place a test call over the new SBC, and the call succeeds.

When you attempt to transfer the call, the transfer fails. A portion of the SIP ladder is shown in the exhibit. (Click the Exhibit tab.)



What is a possible cause of the issue?

- A. The SSL certificate of the SBC is incorrect.
- B. The Refer on the SBC is misconfigured.
- C. notify is enabled in the SIP options of the SBC.
- D. The carrier rejects the format of the forwarded FROM number.

Answer: B

Explanation:

Reference:
<https://docs.microsoft.com/en-us/microsoftteams/troubleshoot/phone-system/direct-routing/issues-with-call-tran>

NEW QUESTION 51

- (Exam Topic 3)
Your company uses a third-party ticketing system.
You need to send an alert to the ticketing system when an IP phone goes offline. What should you do?

- A. Add a webhook.
- B. Create a live events policy.
- C. Add a channel alert.
- D. Add a configuration profile for the IP phones.

Answer: A

NEW QUESTION 56

- (Exam Topic 3)
You have a Microsoft Teams Phone deployment.
You have a dial plan that contains the following normalization rule:

- > Pattern: ^8?(\d{7})\$
- > Translation: +1330\$1

How will the phone numbers be normalized? To answer, select the appropriate options in the answer area. NOTE: Each correct selection is worth one point.

Answer Area

5551212:

+1330

+13305551212

+133085551212

5551212

85551212

85551212:

+1330

+13305551212

+133085551212

5551212

85551212

- A. Mastered
 B. Not Mastered

Answer: A

Explanation:

Answer Area

5551212:

	▼
+1330	
+13305551212	
+133085551212	
5551212	
85551212	

85551212:

	▼
+1330	
+13305551212	
+133085551212	
5551212	
85551212	

NEW QUESTION 58

- (Exam Topic 3)

Note: This question is part of a series of questions that present the same scenario. Each question in the series contains a unique solution that might meet the stated goals. Some question sets might have more than one correct solution, while others might not have a correct solution.

After you answer a question in this section, you will NOT be able to return to it. As a result, these questions will not appear in the review screen.

You are optimizing a network to better support voice and collaboration workloads in Microsoft Teams. When the users are at a specific corporate site, you need to prevent the users from adding video during calls. Solution: You run New-CsTeamsMeetingPolicy and set the -AllowIPVideo parameter to \$False.

Does this meet the goal?

- A. Yes
 B. No

Answer: B

Explanation:

Instead run New-CsTeamsNetworkRoamingPolicy and set the -AllowIPVideo parameter to \$False.

Note: The CsTeamsMeetingPolicy cmdlets enable administrators to control the type of meetings that users can create or the features that they can access while in a meeting.

The -AllowIPVideo parameter determines whether video is enabled in a user's meetings or calls. Set this to TRUE to allow the user to share their video. Set this to FALSE to prohibit the user from sharing their video.

Reference:

<https://docs.microsoft.com/en-us/powershell/module/skype/new-csteamsmeetingpolicy>

NEW QUESTION 61

- (Exam Topic 3)

You have a Microsoft Teams Phone deployment.

You have Teams devices located in meeting rooms and public areas. You need to turn on Device lock for the devices.

What should you configure?

- A. a calling policy
 B. a setup policy
 C. a Teams policy
 D. a configuration profile

Answer: D

Explanation:

Microsoft Teams Physical Device Management

NOTE: As at June 2020, there are no options to configure the Device Configuration Profiles by API or PowerShell.

There are a number of Microsoft Teams certified devices on the market from several different manufactures. These devices are listed on the Microsoft Teams Devices Page.

Once a device is logged in and the user setup, the device is registered to the tenant and a policy applied against it from the Configuration Profiles listed in the Microsoft Teams Admin Portal.

These Configuration Profiles allow you to set options like the devices: Timeout and lock status

Language Timezone Time format Screen saver

Network settings; and

To enable or disable the second PC port

If the Microsoft 365 tenant also has Intune setup, then the device is registered to Intune and any compliance policies are applied when the first user logs in.

Different Configuation Profiles can be used to setup phones with common attributes Reference:
<https://sbconnect.com.au/pages/physical-device-management.html>

NEW QUESTION 66

- (Exam Topic 3)

You use Microsoft Teams live events.

You configure a live events policy as shown in the following exhibit.

Sales Live Event Policy

Policy for Melbourne Live Events

Live events scheduling

On

Transcription for attendees

This setting is also controlled at Meetings > Meeting policies > Voice > Calling policies and Voice > Voicemail policies

On

Who can join scheduled live events

This setting is also controlled at Meetings > Meeting policies and Meetings > Meeting settings

Everyone in the organization

Record an event

This setting is also controlled at Meetings > Meeting policies and voice > Calling policies

Always record

Use the drop-down menus to select the answer choice that completes each statement based on the information presented in the graphic.
NOTE: Each correct selection is worth one point.

Answer Area

The policy will allow [answer choice] to join a live event

only employees

employees and their guests only

employees, guests, and federated partners

Live events based on the policy will support [answer choice]

attendee registration

presenter bios

subtitles in different languages

- A. Mastered
- B. Not Mastered

Answer: A

Explanation:

Box 1: only employees

In the exhibit we see: Who can join scheduled live events: Everyone in the organization Box 2: subtitles in different languages

We see: Transcription for attendees: On Reference:

<https://learn.microsoft.com/en-us/microsoftteams/teams-live-events/plan-for-teams-live-events>

NEW QUESTION 70

- (Exam Topic 3)

Your company has a main office in New York and a branch office in Calgary. All offices connect to each other by using a dedicated WAN.

You have a Microsoft Teams Phone deployment.

You need to recommend a Direct Routing solution that meets the following requirements:

- If a Session Border Controller (SBC) fails in the New York office, PSTN services must remain available through a local PSTN egress in New York. The Calgary office must prioritize a local PSTN egress and ensure that PSTN services remain available in the event of a local SBC outage.
- The number of SBCs must be minimized.

What should you recommend for each office? To answer, drag the appropriate components to the correct offices. Each component may be used once, more than once, or not at all. You may need to drag the split bar between panes or scroll to view content.

NOTE: Each correct selection is worth one point.

Components	Answer Area
A cross-site SBC pair	New York: <input type="text"/> Component
A local redundant SBC pair	Calgary: <input type="text"/> Component
A single SBC	
PSTN over WAN	

- A. Mastered
- B. Not Mastered

Answer: A

Explanation:

Components	Answer Area
A cross-site SBC pair	New York: A local redundant SBC pair
A local redundant SBC pair	Calgary: A single SBC
A single SBC	
PSTN over WAN	

NEW QUESTION 73

- (Exam Topic 3)

You have a Microsoft Teams Phone deployment that is used in the United States. You need to ensure that emergency calls placed to 9911. What should you configure?

- A. a dial plan normalization rule
- B. an emergency calling policy
- C. an emergency call routing policy
- D. an outbound PSTN number translation rule

Answer: C

NEW QUESTION 78

- (Exam Topic 3)

You have a Microsoft Lync Server 2013 deployment. Some users use Enterprise Voice.

You plan to migrate to Microsoft Teams.

You need to design a migration solution. The solution must minimize the impact on end users during the migration.

What should you include in the solution?

- A. Migrate all users directly from Lync Server 2013 to Teams.
- B. Migrate the Enterprise Voice users from Lync Server 2013 to Microsoft Skype for Business Server 2019. and then migrate the Enterprise Voice users to Teams.
- C. Migrate all other users directly from Lync Server 2013 to Teams.
- D. Perform an in-place upgrade from Lync Server 2013 to Microsoft Skype for Business Server 2015, and then migrate all users to Teams.

Answer: D

NEW QUESTION 80

- (Exam Topic 3)

Your company uses configuration profiles to manage Microsoft Teams-certified IP phones. The Standard configuration profile is applied to the IP phones.

The help desk receives reports that several user phones fail to lock automatically after the timeout period. You need to verify whether the configuration profile is applied to the problematic phones.

Solution: From Devices in the Microsoft Teams admin center, you select IP Phones, find the reported phones, and review the Configuration profile column.

Does this meet the goal?

- A. Yes
- B. No

Answer: A

NEW QUESTION 84

- (Exam Topic 3)

Your company has an office in Seattle.

The default dial-in number for the company's Microsoft Teams meetings has an area code of 425.

The company does NOT have an office in New York. However, most of the company's customers are in New York.

You need to get a new default dial- In number that has a local 718 area code. You will NOT define additional location information in Teams.

Which two actions should you perform before you assign the bridge? Each correct answer presents part of the solution.

NOTE: Each correct selection is worth one point.

- A. Get a Dedicated conference bridge (Toll) number.
- B. Search for new numbers by using a 718 area code.
- C. Get an auto attendant toll-free number.
- D. Get a Dedicated conference bridge (Toll Free) number.
- E. Search for new numbers by using New York.

Answer: AD

NEW QUESTION 85

- (Exam Topic 3)

You have a Microsoft Teams deployment and an existing telephony solution that provides PSTN capability to on premises third-party PBX systems in two separate locations.

You need to implement a redundant PSTN solution for Microsoft Teams Phone. The solution must use the existing telephony carrier services. The solution must ensure that outbound calls can be made if a component fails.

Which three components should you implement? Each correct answer presents part of the solution. NOTE: Each correct selection is worth one point

- A. highly available Session Border Controllers (SBCs)
- B. calling policies
- C. PSTN usages
- D. voice routing policies
- E. tenant dial plans

Answer: ACD

Explanation:

Reference:

<https://docs.microsoft.com/en-us/microsoftteams/direct-routing-voice-routing>

NEW QUESTION 86

- (Exam Topic 3)

Your company has offices in Paris and London.

You are migrating from an on-premises PBX telephony solution to a Microsoft Teams Phone deployment that uses Direct Routing. You plan to use the existing telephony carrier. The new solution will provide telephony services to users in both offices.

You need to recommend a solution that is the most resistant to possible failures. The solution must ensure that calls are routed through each user's respective office.

Which two actions should you include in the recommendation? Each correct answer presents part of the solution.

NOTE: Each correct selection is worth one point

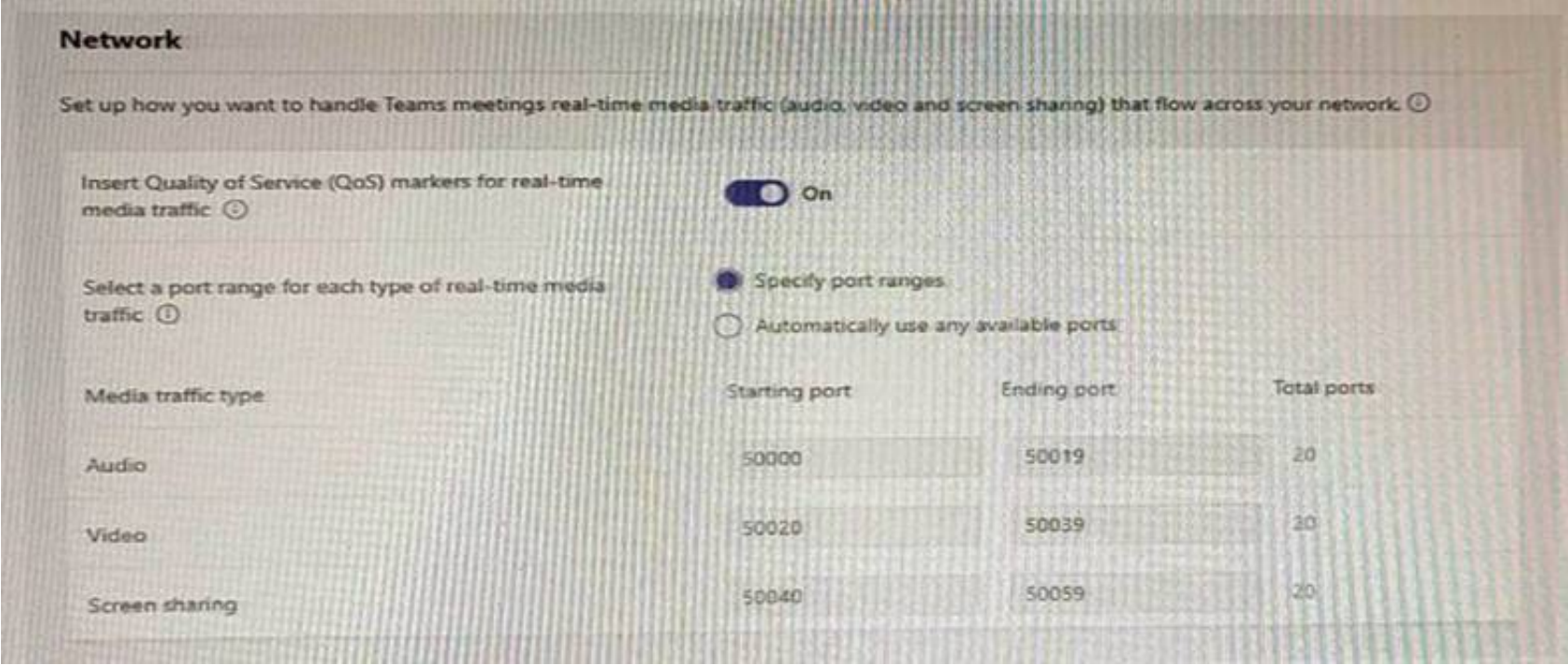
- A. Deploy one Session Border Controller (SBC) to each office
- B. Configure the SBCs as a high-availability pair.
- C. Deploy a highly available Session Border Controller (SBC) pair to each office.
- D. Configure voice routing policies for each office.
- E. Configure a single voice routing policy for all users.

Answer: AC

NEW QUESTION 88

- (Exam Topic 3)

The network meeting settings for Microsoft Teams are configured as shown in the following exhibit.



Use the drop-down menus to select the answer choice that completes each statement based on the information presented in the graphic.

NOTE: Each correct selection is worth one point.

The Teams Transport Relay service will use UDP ports [answer choice].

▼

3478 through 3481

50000 through 50019

50020 through 50039

50040 through 50050

If you set Insert Quality of Service (QoS) markers for real-time media traffic to **Off**, the Teams Transport Relay Service will use UDP port [answer choice].

▼

80

443

3478

50000

- A. Mastered
- B. Not Mastered

Answer: A

Explanation:

Graphical user interface, text, application, email Description automatically generated

NEW QUESTION 93

- (Exam Topic 3)

You have a Teams Phone deployment. The deployment has a single Session 3crder Controller (SBC) that uses Direct Routing. Users report that outbound PSTN calls fail.

You need to identify the quantity of specific SBC SIP errors. What should you review m the Microsoft Teams admin center?

- A. Endpoint Reports in Microsoft Call Quality Dashboard
- B. the network effectiveness ratio on the usage tab for the SBC
- C. the Jitter tab in Network parameters
- D. Quality of Experience Reports in Microsoft Call Quality Dashboard

Answer: A

NEW QUESTION 95

- (Exam Topic 3)

You have a Microsoft Teams deployment.

You have two teams that have meeting requirements as shown in the following table.

Name	Requirement
Human Resources	<div><div>• 5,000 attendees must be supported.</div><div>• All attendees must be able to ask questions.</div><div>• Streaming by using a Stream Encoder must be supported.</div></div>
Sales	<div><div>• 100 attendees must be supported</div><div>• The meeting must allow attendee registration.</div><div>• Attendee registrations must be approved by meeting organizers.</div></div>

You need to recommend which type of meeting to use for each team.

What should you recommend for each team? To answer, drag the meeting types to the correct teams Each meeting type may be used once, more than once, or not at all. You may need to drag the split bar between panes or scroll to view content.

NOTE: Each correct selection is worth one point.

Meeting types

0

Live event

0

Teams meeting

0

Virtual appointment

0

Webinar

Answer Area

Human Resources:

0

Sales:

0

- A. Mastered
- B. Not Mastered

Answer: A

Explanation:

Box 1: Live event Live events

Live events are structured meetings that enable your organization to schedule and produce events that stream to large online audiences—up to 20,000 people. With live events, the audience interaction is a managed Q&A experience.

Note: Meetings, webinars, and live events are all types of meetings, but webinars and live events provide additional control for the organizer over the conversation and participants. Webinars provide two-way interaction while live events provide a managed Q&A experience.

The different types of meetings also have different participant limits and participant capabilities.

* Live events

Number of participants: Up to 20,000

- Broadcast to large audiences.
- Moderated Q&A for audience interaction.
- Can specify producers and presenters, including external presenters.
- Supports more advanced production capabilities. Registration supported: no

Box 2: Webinar Webinars

Webinars are structured meetings where presenters and participants have clear roles. A key difference between webinars and Teams meetings is that webinars support robust registration management, customizable event and registration site, and event-oriented default meeting options.

Note: Meetings, webinars, and live events are all types of meetings, but webinars and live events provide additional control for the organizer over the conversation and participants. Webinars provide two-way interaction while live events provide a managed Q&A experience.

The different types of meetings also have different participant limits and participant capabilities.

* Webinars

Number of participants: Up to 1,000

- Participants up to 1,000 have fully interactive capabilities.
- Audience interaction configurable.
- Can specify presenters Registration supported: yes Incorrect:

* Meetings

Number of participants: Up to 20,000

- Participants up to 1,000 have fully interactive equal meeting capabilities.
- Participants over 1,000 up to 20,000 have View-only capabilities. Registration supported: yes

Reference:

<https://learn.microsoft.com/en-us/microsoftteams/quick-start-meetings-live-events>

NEW QUESTION 96

- (Exam Topic 3)

Your company has a Microsoft Teams Phone deployment.

You plan to deploy auto attendants and call queues.

The support desk requires that its auto attendant be able to forward calls after hours to local mobile phone numbers.

You need to identify which licenses to assign to auto-attendant. The solution must minimize costs. Which two licenses should you identify? Each correct answer presents part of the solution. NOTE: Each correct selection is worth one point.

- A. Microsoft 365 Phone System
- B. Microsoft 365 Domestic Calling Plan
- C. Microsoft 365 Phone System - Virtual User
- D. Office 365 E3
- E. Microsoft 365 E5
- F. Microsoft 365 Domestic and International Calling Plan

Answer: BC

Explanation:

Reference:

<https://docs.microsoft.com/en-us/microsoftteams/plan-auto-attendant-call-queue>

NEW QUESTION 99

- (Exam Topic 3)

Note: This question is part of a series of questions that present the same scenario. Each question in the series contains a unique solution that might meet the stated goals. Some question sets might have more than one correct solution, while others might not have a correct solution.

After you answer a question in this section, you will NOT be able to return to it. As a result, these questions will not appear in the review screen.

You need to create a new call queue to route calls to support agents. The support agents must be able to see their call queue history and the shared transcribed voicemail. The solution must minimize administrative effort.

Solution: You configure group call pickup for the call queue. Does this meet the goal?

- A. Yes
- B. No

Answer: B

Explanation:

Reference:

<https://regroove.ca/stellark/2021/09/15/redirect-teams-auto-attendant-voicemail-to-a-channel-updated-method/>

NEW QUESTION 101

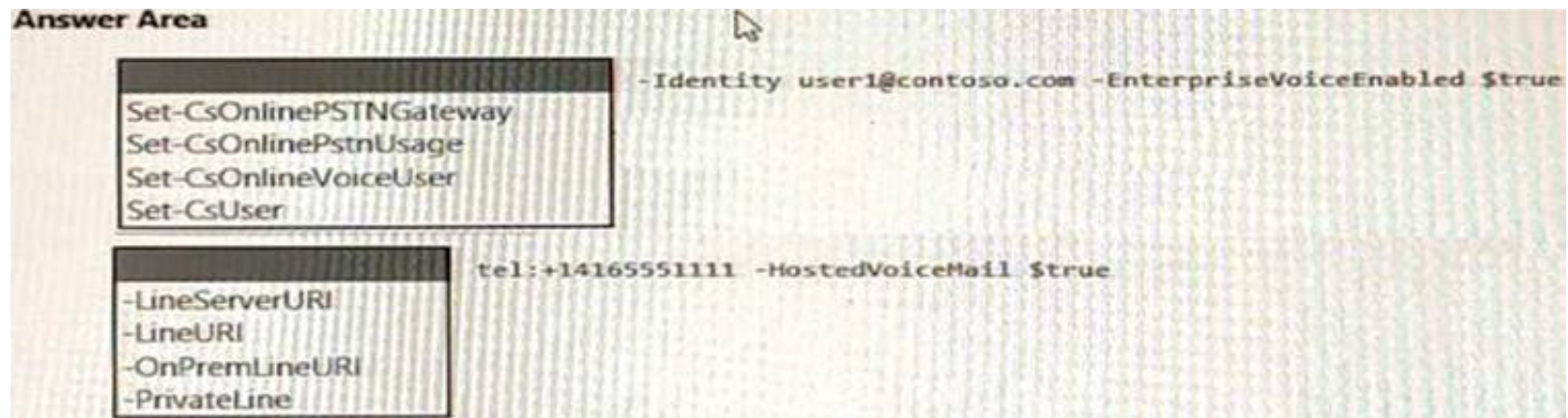
- (Exam Topic 3)

You have a Microsoft Teams Phone deployment.

You have a cloud-only user named user1@contoso.com.

You need to enable a Direct Routing phone number for user1@contoso.com.

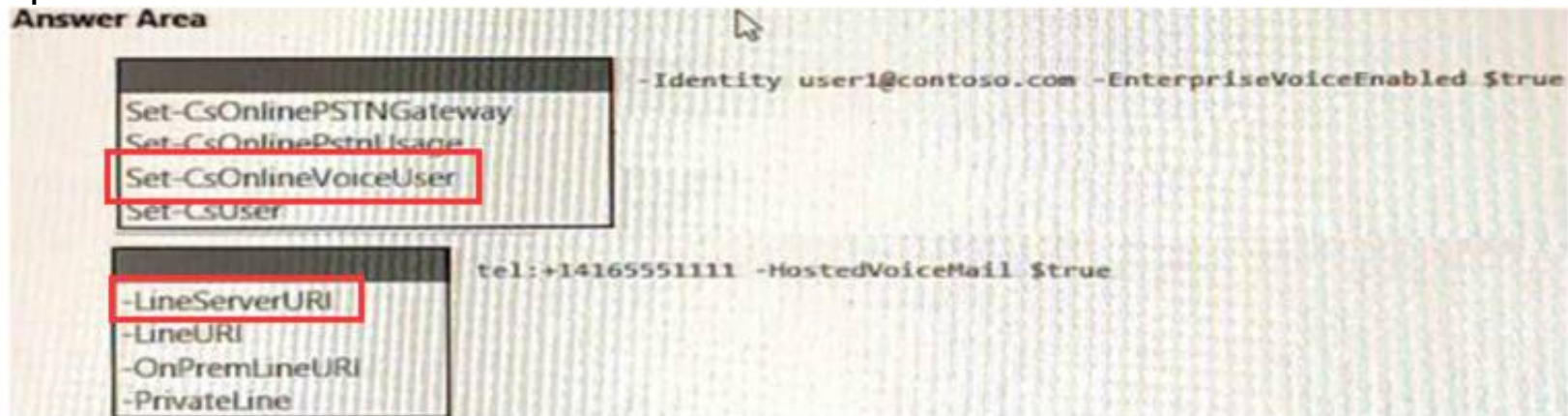
How should you complete the PowerShell script? To answer, select the appropriate options in the answer area. NOTE: Each correct selection is worth one point.



- A. Mastered
- B. Not Mastered

Answer: A

Explanation:



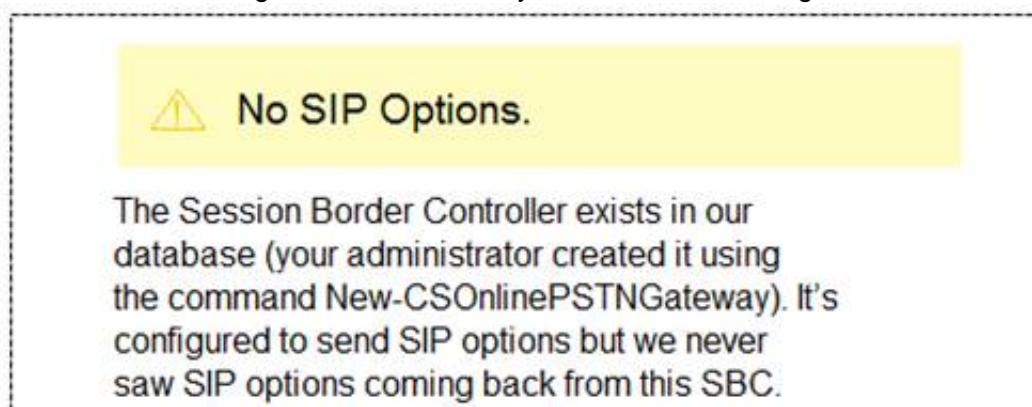
NEW QUESTION 102

- (Exam Topic 3)

You have a Microsoft Teams Phone deployment. You are deploying Direct Routing.

All users have a SIP URI in the format of user@contoso.com. The Session Border Controller (SBC) is named sbc.voice.contoso.com.

When troubleshooting errors on the SBC, you receive the warning shown in the following exhibit.



What is a possible cause of the issue?

- A. The certificate does not match the FQDN on the SBC.
- B. The firewall blocks inbound traffic on port 443 to the SBC.
- C. Only TLS 1.0 is enabled on the SBC.
- D. Microsoft 365 Phone System licenses are not assigned to the users.

Answer: A

Explanation:

Reference:

<https://docs.microsoft.com/en-us/microsoftteams/troubleshoot/phone-system/direct-routing/sip-options-tls-certif>

NEW QUESTION 105

.....

Thank You for Trying Our Product

We offer two products:

1st - We have Practice Tests Software with Actual Exam Questions

2nd - Questions and Answers in PDF Format

MS-721 Practice Exam Features:

- * MS-721 Questions and Answers Updated Frequently
- * MS-721 Practice Questions Verified by Expert Senior Certified Staff
- * MS-721 Most Realistic Questions that Guarantee you a Pass on Your FirstTry
- * MS-721 Practice Test Questions in Multiple Choice Formats and Updatesfor 1 Year

100% Actual & Verified — Instant Download, Please Click
[Order The MS-721 Practice Test Here](#)