

Exam Questions 400-007

Cisco Certified Design Expert (CCDE v3.0) Written Exam

<https://www.2passeasy.com/dumps/400-007/>



NEW QUESTION 1

Which two characteristics apply to firewall transparent mode operations in a firewall solution design? (Choose two.)

- A. Changes in the existing IP addressing and subnets are required
- B. The firewall can participate actively on spanning tree.
- C. Multicast traffic can traverse the firewall.
- D. OSPF adjacencies can be established through the firewall
- E. The firewall acts like a router hop in the network.

Answer: CD

NEW QUESTION 2

An architect receives a functional requirement for a NAC system from a customer security policy stating that if a corporate Wi-Fi device does not meet current AV definitions, then it cannot access the corporate network until the definitions are updated. Which component should be built into the NAC design?

- A. posture assessment with remediation VLAN
- B. quarantine SGTs
- C. dACLs with SGTs
- D. quarantine VLAN

Answer: A

NEW QUESTION 3

Which best practice ensures data security in the private cloud?

- A. Use IPsec for communication between unsecured network connection
- B. Encrypt data at rest and in transition.
- C. Use the same vendor for consistent encryption.
- D. Anonymize data ownership to comply with privacy rules.

Answer: B

NEW QUESTION 4

Which three items do you recommend for control plane hardening of an infrastructure device? (Choose three.)

- A. redundant AAA servers
- B. Control Plane Policing
- C. warning banners
- D. to enable unused .services
- E. SNMPv3
- F. routing protocol authentication

Answer: BEF

NEW QUESTION 5

A network attacker exploits application flaws to compromise critical systems in the organization with these objectives:

- Obtain sensitive data and export the data out of the network.
- Compromise developer and administrator credentials to potentially

What is the next step after application discovery is completed in Zero Trust networkings

- A. Establish visibility and behavior modeling
- B. Enforce policies and microsegmentation.
- C. Assess real-time security health.
- D. Ensure trustworthiness of systems.

Answer: B

Explanation:

<https://www.cisco.com/c/en/us/solutions/collateral/enterprise/design-zone-security/zt-arch-guide.html>

NEW QUESTION 6

An enterprise has identified these causes for inefficient CAPEX spending:

- CAPEX planning is driven by technology and not by business objectives.
- The CAPEX planning team lacks the data it needs to perform due diligence tasks.
- The organizational structure lacks sufficient accountability and incentives.

Which corporate cultural change contributes to improving the effectiveness of CAPEX spending?

- A. Build a financial control function that delivers high-quality reports on operational expenses for business insight and financial reporting.
- B. CxO-level staff must have a full technical understanding but the should not trust their technical leaders fully.
- C. Adopt new organizational models that promote real accountability for RO
- D. not just revenue
- E. EBITDA, and cash.
- F. Marketing and product management divisions must reduce their CAPEX budgets significantly to drive the change.

Answer: C

NEW QUESTION 7

What are two top cloud-native security challenges faced by today's cloud-oriented organizations? (Choose two)

- A. establishing user roles
- B. polymorphism
- C. lack of visibility and tracking
- D. increased attack surface
- E. user credential validation

Answer: CD

NEW QUESTION 8

You are designing a network running both IPv4 and IPv6 to deploy QoS Which consideration is correct about the QoS for IPv4 and IPv6?

- A. IPv4 and IPv6 traffic types can use queuing mechanisms such as LLQ, PQ and CQ.
- B. IPv6 packet classification is only available with process switching, whereas IPv4 packet classification is available with both process switching and CEF.
- C. IPv6 and IB/4 traffic types can use a single QoS policy to match both protocols
- D. Different congestion management mechanisms need to be used for IPv4 and IPv6 traffic types

Answer: C

NEW QUESTION 9

Which SDN architecture component is used by the application layer to communicate with the control plane layer to provide instructions about the resources required by applications?

- A. southbound APIs
- B. northbound APIs
- C. orchestration layer
- D. SDN controller

Answer: B

NEW QUESTION 10

Company XYZ wants to improve the security design of their network to include protection from reconnaissance and DoS attacks on their sub interfaces destined toward next hop routers. Which technology can be used to prevent these types of attacks?

- A. MPP
- B. CPPr
- C. CoPP
- D. DPP

Answer: B

Explanation:

<https://learningnetwork.cisco.com/s/question/0D53i00000KsuyvCAB/copp-vs-cppr>

NEW QUESTION 10

Which two statements describe the hierarchical LAN design model? (Choose two)

- A. It is a well-understood architecture that provides scalability
- B. It is the best design for modern data centers
- C. It is the most optimal design but is highly complex
- D. It provides a simplified design
- E. Changes, upgrades, and new services can be introduced in a controlled and staged manner

Answer: AE

NEW QUESTION 12

You were tasked to enhance the security of a network with these characteristics:

- A pool of servers is accessed by numerous data centers and remote sites
- The servers are accessed via a cluster of firewalls
- The firewalls are configured properly and are not dropping traffic
- The firewalls occasionally cause asymmetric routing of traffic within the server data center.

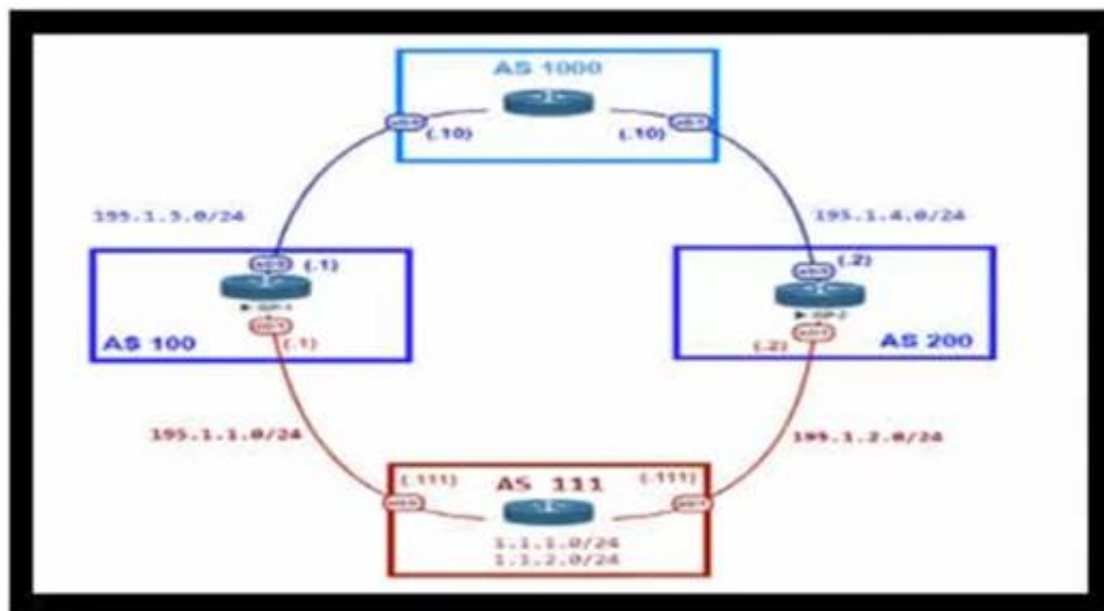
Which technology should you recommend to enhance security by limiting traffic that could originate from a hacker compromising a workstation and redirecting flows at the servers?

- A. Poison certain subnets by adding static routes to Null0 on the core switches connected to the pool of servers.
- B. Deploy uRPF strict mode.
- C. Limit sources of traffic that exit the server-facing interface of the firewall cluster with ACLs.
- D. Deploy uRPF loose mode

Answer: C

NEW QUESTION 13

Refer to the exhibit.



An engineer is designing the network for a multihomed customer running in AS 111 does not have any other Ass connected to it. Which technology is more comprehensive to use in the design to make sure that the AS is not being used as a transit AS?

- A. Configure the AS-set attribute to allow only routes from AS 111 to be propagated to the neighbor ASs.
- B. Use the local preference attribute to configure your AS as a non-transit" AS.
- C. include an AS path access list to send routes to the neighboring ASs that only have AS 111 in the AS path field.
- D. Include a prefix list to only receive routes from neighboring ASs.

Answer: C

NEW QUESTION 16

Which two characteristics are associated with 802.1s? (Choose two)

- A. 802.1s supports up to 1024 instances of 802.1
- B. 802.1 s is a Cisco enhancement to 802.1w.
- C. 802.1s provides for faster convergence over 802.1D and PVST+.
- D. CPU and memory requirements are the highest of all spanning-tree STP implementations.
- E. 802.1s maps multiple VLANs to the same spanning-tree instance

Answer: CE

NEW QUESTION 17

Company XYZ connects its sites over a private WAN. Their overlay network is running a DMVPN setup where the headquarters site is the hub. The company is planning on implementing multicast routing on the network. What should be used in the multicast routing design?

- A. PIM dense mode with RP located at the hub
- B. PIM sparse mode with RP located at each remote site
- C. PIM sparse mode with RP located at the hub
- D. PIM dense mode with RP located at each remote site

Answer: C

Explanation:

<https://www.ccexpert.us/routing-switching-2/dynamic-multipoint-vpn.html>

NEW QUESTION 21

Which relationship between IBGP and the underlying physical topology is true?

- A. iBGP full mesh requirement does not dictate any specific network topology.
- B. iBGP can work only on a ring network topology with a link-state protocol like OSPF or IS-IS
- C. iBGP full mesh requires an underlying fully meshed network topology.
- D. iBGP does not work on a ring network topology even with an underlying IGP.

Answer: A

Explanation:

iBGP peers can be multiple hops away. not like eBGP that needs direct connection (or ebgp-multihop defined). thus, only IP connectivity between two peers is required for an adjacency to form.

NEW QUESTION 23

You are tasked with the design of a high available network. Which two features provide fail closed environments? (Choose two.)

- A. EIGRP
- B. RPVST+
- C. MST
- D. L2MP

Answer: AB

NEW QUESTION 26

A financial company requires that a custom TCP-based stock-trading application be prioritized over all other traffic for the business due to the associated revenue. The company also requires that VoIP be prioritized for manual trades. Which directive should be followed when a QoS strategy is developed for the business?

- A. Allow VoIP and the custom application to share the same priority queue,
- B. The custom application and VoIP must be assigned their own separate priority queue.
- C. Interleave the custom application with other TCP applications in the same CBWR
- D. Avoid placing the custom application in a CBWFQ queue that contains other

Answer: C

NEW QUESTION 30

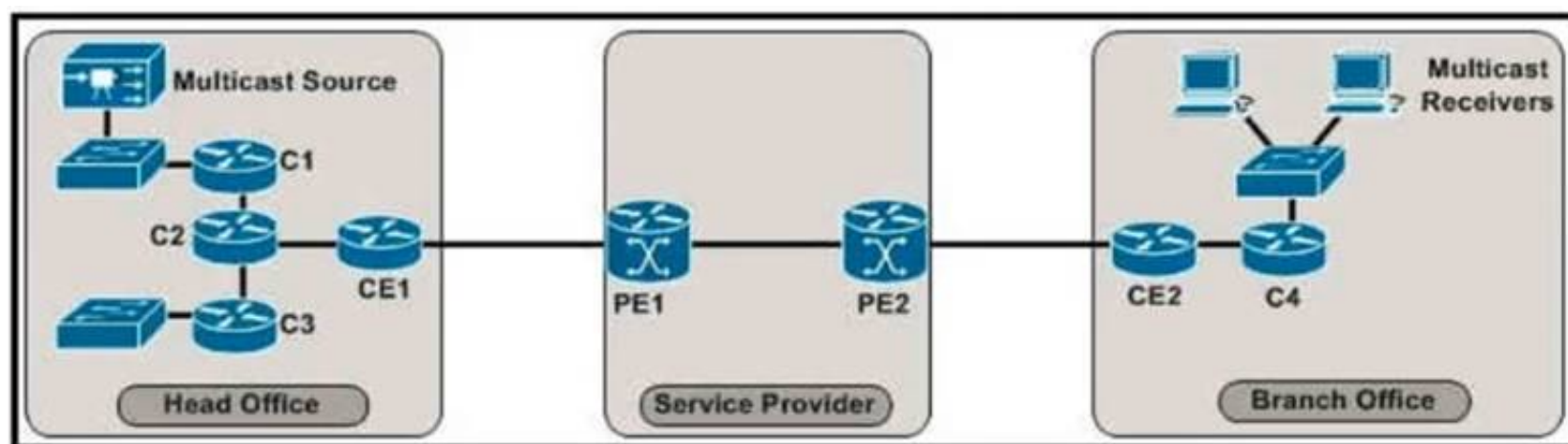
In an OSPF network with routers connected together with Ethernet cabling, which topology typically takes the longest to converge?

- A. partial mesh
- B. full mesh
- C. ring
- D. squared
- E. triangulated

Answer: B

NEW QUESTION 33

Refer to the exhibit.



The enterprise customer wants to stream one-way video from their head office to eight branch offices using multicast. Their current service provider provides a Layer3 VPN solution and manages the CE routers, but they do not currently support multicast. Which solution quickly allows this multicast traffic to go through while allowing for future scalability?

- A. Enable a GRE tunnel between nodes CE1 and CE2
- B. Enable a GRE tunnel between nodes C2 and C4
- C. Enable a GRE tunnel between nodes C1 and C4
- D. Implement hub and spoke MPLS VPN over DMVPN (also known as 2547o DMVPN) between CE1 and CE2
- E. The service provider must provide a Draft Rosen solution to enable a GRE tunnel between nodes PE1 and PE2

Answer: B

NEW QUESTION 37

Which BGP feature provides fast convergence?

- A. BGP PIC |
- B. BGP-EVPN
- C. BGP FlowSpec
- D. BGP-LS

Answer: A

NEW QUESTION 39

What is a disadvantage of the traditional three-tier architecture model when east west traffic between different pods must go through the distribution and core layers?

- A. low bandwidth
- B. securityC scalability
- C. high latency

Answer: A

NEW QUESTION 40

You are designing a network for a branch office. In order to improve convergence time, you are required to use the BFD feature Which four routing protocols can you use to facilitate this? (Choose four.)

- A. IS-IS
- B. static
- C. RIP
- D. EIGRP
- E. BGP

Answer: ABDE

NEW QUESTION 41

Which three components are part of the foundational information security principles of the CIA triad? (Choose three.)

- A. cryptography
- B. confidentiality
- C. authorization
- D. identification
- E. integrity
- F. availability

Answer: BEF

NEW QUESTION 42

Which extensions to GRE tunneling provide session tracking and in-order packet delivery in exchange for additional state stored in tunnel endpoints?

- A. GRE Protocol Type and Checksum extension fields.
- B. GRE Version and Reserved0 extension fields.
- C. No extension fields are available in the GRE header to track session data and packet sequences.
- D. GRE Key and Sequence number extensions.

Answer: D

NEW QUESTION 47

Drag and drop the multicast protocols from the left onto the current design situation on the right.

PIM-SM, SSM, BIDIR	IPv4 Group Management
PIM-DM, PIM-SM, SSM, BIDIR	IPv4 Forwarding
IGMP	IPv4 Interdomain Source Discovery
MSDP	IPv6 Group Management
MLD	IPv6 Forwarding

- A. Mastered
- B. Not Mastered

Answer: A

Explanation:

A picture containing table Description automatically generated

IPv4:

Host Registration - IGMP

Router Registration - PIM-DM, PIM-SM, SSM, BIDIR Inter-Domain Source Discovery - MSDP

IPv6:

Host Registration - MLD

Router Registration - PIM-SM, SSM, BIDIR

NEW QUESTION 49

A multicast network is sing Bidirectional PIM. Which two combined actions achieve high availability so that two RPs within the same network can act in a redundant manner? (Choose two)

- A. Use two phantom RP addresses
- B. Manipulate the administration distance of the unicast routes to the two RPs
- C. Manipulate the multicast routing table by creating static mroutes to the two RPs
- D. Advertise the two RP addresses in the routing protocol
- E. Use anycast RP based on MSDP peering between the two RPs
- F. Control routing to the two RPs through a longest match prefix

Answer: AF

Explanation:

<https://community.cisco.com/t5/networking-knowledge-base/rp-redundancy-with-pim-bidir-phantom-rp/ta-p/31>

NEW QUESTION 51

Which actions are performed at the distribution layer of the three-layer hierarchical network design model? (Choose two)

- A. Fast transport
- B. Reliability
- C. QoS classification and marking boundary
- D. Fault isolation
- E. Redundancy and load balancing

Answer: DE

NEW QUESTION 54

An engineer is designing the QoS strategy for Company XYZ. Based on initial analysis, a lot of scavenger type of traffic is traversing the network's 20Mb Internet link toward the service provider. The new design must use a QoS technique that limits scavenger traffic to 2 Mbps, which helps avoid oversubscription of the link during times of congestion. Which QoS technique can be used to facilitate this requirement?

- A. class-based traffic policing
- B. LLQ
- C. CBWFQ
- D. class-based traffic shaping

Answer: C

NEW QUESTION 57

Which methodology is the leading lifecycle approach to network design and implementation?

- A. PPDIOO
- B. Waterfall model
- C. Spiral model
- D. V model

Answer: A

NEW QUESTION 62

Sometimes SDN leverages various overlay networking technologies to create layer(s) of network abstraction. What describes an overlay network?

- A. It transmits packets that traverse over network devices like switches and routers
- B. It encapsulates packets at source and destination, which incurs additional overhead
- C. Packet delivery and reliability occurs at Layer 3 and Layer 4
- D. It is responsible for the delivery of packets; NAT- or VRF-based segregation is required

Answer: B

NEW QUESTION 67

Company XYZ has designed their network to run GRE over IPsec on their Internet-based VPN to connect two sites. Which IPsec tunneling feature can they enable to optimize the data flow while ensuring that the headers contain no duplicate IP addresses?

- A. Transport Mode in IPsec Phase I
- B. Transport Mode in IPsec Phase II
- C. Tunnel Mode in IPsec Phase II
- D. Tunnel Mode in IPsec Phase I

Answer: B

NEW QUESTION 70

Company XYZ wants to redesign the Layer 2 part of their network and wants to use all available uplinks for increased performance. They also want to have end host reachability supporting conversational learning. However, due to design constraints, they cannot implement port-channel on the uplinks. Which other technique can be used to make sure the uplinks are in active/active state?

- A. TRILL
- B. LISP
- C. MSTP
- D. switch stack

Answer: B

NEW QUESTION 71

In the case of outsourced IT services, the RTO is defined within the SLA. Which two support terms are often included in the SLA by IT and other service providers? (Choose two.)

- A. network size and cost
- B. support availability
- C. network sustainability
- D. network reliability
- E. resolution time

Answer: BE

NEW QUESTION 72

Which three elements help network designers to construct secure systems that protect information and resources (such as devices, communication, and data) from unauthorized access, modification, inspection, or destruction? (Choose three.)

- A. confidential
- B. serviceability
- C. reliability
- D. availability
- E. integrity
- F. scalability

Answer: ADE

NEW QUESTION 74

Which two impacts of adding the IP event dampening feature to a network design are true? (Choose two.)

- A. It protects against routing loops.
- B. It switches traffic immediately after a link failure.
- C. It speeds up link failure detection.
- D. It reduces the utilization of system processing resources.
- E. It improves overall network stability.

Answer: DE

NEW QUESTION 76

Which service abstracts away the management of the operating system, middleware, and runtime?

- A. IaaS
- B. PaaS
- C. SaaS
- D. BMaaS

Answer: B

Explanation:

IaaS, PaaS, and SaaS each offer a progressive layer of abstraction after that. IaaS abstracts away the physical compute, network, storage, and the technology needed to virtualize those resources. PaaS goes a step further and abstracts away the management of the operating system, middleware, and runtime.
<https://www.ibm.com/topics/iaas#:~:text=IaaS%20abstracts%20away%20the%20physical,system%2C%20mid>

NEW QUESTION 80

Refer to the table.

CONNECTIVITY	CAPEX	OPEX ANNUAL	INSTALLATION FEE	TERM
DWDM over dark fiber	\$250,000	\$100,000	\$30,000	60 months
CWDM over dark fiber	\$150,000	\$100,000	\$25,000	60 months
MPLS	\$50,000	\$150,000	\$75,000	12 months
Metro Ethernet	\$45,000	\$125,000	\$5,000	36 months

A customer investigates connectivity options for a DCI between two production data centers. The solution must provide dual 10G connections between locations with no single points of failure for Day 1 operations. It must also include an option to scale for up to 20 resilient connections in the second year to accommodate isolated SAN over IP and isolated, dedicated replication IP circuits. All connectivity methods are duplex 10 Gbps. Which transport technology costs the least over two years, in the scenario?

- A. Metro Ethernet
- B. DWDM
- C. CWDM
- D. MPLS

Answer: B

NEW QUESTION 85

You have been asked to design a high-density wireless network for a university campus. Which two principles would you apply in order to maximize the wireless network capacity? (Choose two.)

- A. Implement a four-channel design on 2.4 GHz to increase the number of available channels
- B. Choose a high minimum data rate to reduce the duty cycle.
- C. increases the number of SSIDs to load-balance the client traffic.
- D. Make use of the 5-GHz band to reduce the spectrum utilization on 2.4 GHz when dual-band clients are used.
- E. Enable 802.11n channel bonding on both 2.4 GHz and 5 GHz to increase the maximum aggregated cell throughput.

Answer: BD

NEW QUESTION 89

A healthcare customer requested that SNMP traps must be sent over the MPLS Layer 3 VPN service. Which protocol must be enabled?

- A. SNMPv3
- B. Syslog

- C. Syslog TLS
- D. SNMPv2
- E. SSH

Answer: A

NEW QUESTION 93

The controller has a global view of the network, and it can easily ensure that the network is in a consistent and optimal configuration. Which two statements describe a centralized SDN control path? (Choose two.)

- A. Scaling of the centralized controller cluster is challenging for services like DHCP and load-balancing.
- B. It is highly-available by design with no single-point-of-failure risks present.
- C. Integrating smart NIC capabilities on the local host level is made easier through rest APIs.
- D. It significantly improves the latency when performing reactive handling of PACKET_IN events.
- E. It centralized controller can support all southbound APIs, which allows for easy integration with legacy equipment.

Answer: AE

NEW QUESTION 95

Company ABC uses IPv4-only. Recently they started deploying new endpoint devices. For operational reasons, IPv6 cannot be disabled on these new endpoint devices. Which security measure prevents the new endpoint from learning an IPv6 prefix from an attacker?

- A. Source Guard and Prefix Guard
- B. Router Advertisement Guard
- C. Prefix Guard
- D. Secure Neighbor Discovery

Answer: B

NEW QUESTION 96

Which tool automates network implementation activities and shortens the implementation lifecycle?

- A. LISP
- B. Java
- C. Conclusion
- D. Python

Answer: D

NEW QUESTION 101

You are designing an Out of Band Cisco Network Admission Control. Layer 3 Real-IP Gateway deployment for a customer Which VLAN must be trunked back to the Clean Access Server from the access switch?

- A. authentication VLAN
- B. user VLAN
- C. untrusted VLAN
- D. management VLAN

Answer: D

NEW QUESTION 104

A network security team uses a purpose-built tool to actively monitor the campus network, applications, and user activity. The team also analyzes enterprise telemetry data from IPFIX data records that are received from devices in the campus network. Which action can be taken based on the augmented data?

- A. reduction in time to detect and respond to threats
- B. integration with an incident response plan
- C. adoption and improvement of threat-detection response
- D. asset identification and grouping decisions

Answer: A

NEW QUESTION 107

You are designing the QoS policy for a company that is running many TCP-based applications. The company is experiencing tail drops for these applications. The company wants to use a congestion avoidance technique for these applications. Which QoS strategy can be used to fulfill the requirement?

- A. weighted fair queuing
- B. weighted random early detection
- C. low-latency queuing
- D. first-in first-out

Answer: C

NEW QUESTION 108

Company XYZ wants to use the FCAPS ISO standard for network management design. The focus of the design should be to monitor and keep track of any performance issues by continuously collecting and analyzing statistical information to monitor, correct, and

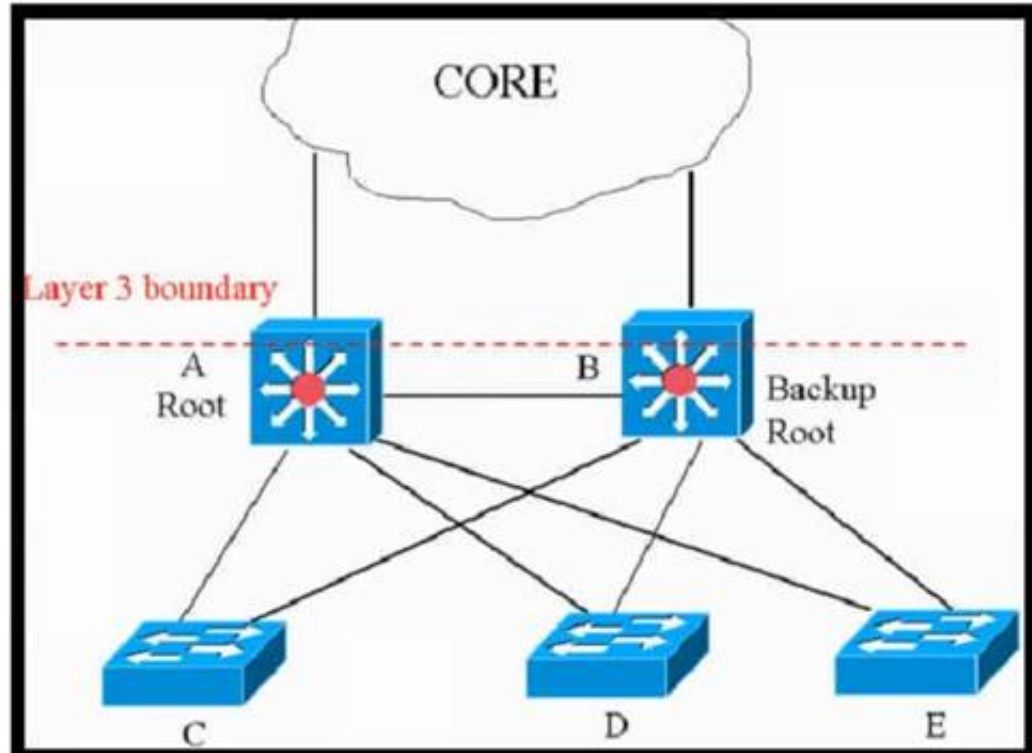
optimize any reduced responsiveness across the network. Which layer accomplishes this design requirement?

- A. fault management
- B. accounting management
- C. performance management
- D. security management

Answer: C

NEW QUESTION 112

Refer to the exhibit.



This network is running legacy STP 802.1 d. Assuming "hello_timer" is fixed to 2 seconds, which parameters can be modified to speed up convergence times after single link/node failure?

- A. The transit_delay=5 and dpdu_delay=20 are recommended values, considering helto_timer=2 and specified
- B. Only the maximum_transmission_halt_delay and diameter parameters are configurable parameters in 802. to speed up STP convergence process
- C. The max_age and forward delay parameters can be adjusted to speed up STP convergence process.
- D. Only the transit_delay and bpdu_delay timers are configurable parameters in 802.1d to speed up STP convergence process.

Answer: C

NEW QUESTION 116

A business wants to refresh its legacy Frame Relay WAN. It currently has product specialists in each of its 200 branches but plans to reduce and consolidate resources. The goal is to have product specialists available via video link when customers visit the nationwide branch offices. Which technology should be used to meet this objective?

- A. DMVPN phase 1 network over the Internet
- B. Layer 3 MPLS VPN hub and spoke
- C. Layer2VPLS
- D. Layer 3 MPLS VPN full mesh

Answer: D

NEW QUESTION 117

Company XYZ, a global content provider, owns data centers on different continents. Their data center design involves a standard three-layer design with a Layer 3-only core. HSRP is used as the FHRP. They require VLAN extension across access switches in all data centers, and they plan to purchase a Layer 2 interconnection between two of their data centers in Europe. In the absence of other business or technical constraints, which termination point is optimal for the Layer 2 interconnection?

- A. at the core layer, to otter the possibility to isolate STP domains
- B. at me aggregation layer because it is the Layer 2 to Layer 3 demarcation point
- C. at the access layer because the STP root bridge does not need to align with the HSRP active node.
- D. at the core layer because all external connections must terminate there for security reasons

Answer: B

NEW QUESTION 119

While designing a switched topology, in which two options is UplinkFast recommended? (Choose two)

- A. when switches of different spanning-tree types are connected (for exampl
- B. 802.1d connecting to 802.1w)
- C. on distribution layer switches
- D. when hello timers are changed to more aggressive values
- E. on access layer switches
- F. on the core switches

Answer: AD

NEW QUESTION 123

Company XYZ Is running a redundant private WAN network using OSPF as the underlay protocol The current design accommodates for redundancy In the network, but it Is taking over 30 seconds for the network to reconverge upon failure Which technique can be Implemented In the design to detect such a failure in a subsecond?

- A. STP
- B. fate sharing
- C. OSPF LFA
- D. BFD
- E. flex links

Answer: D

NEW QUESTION 128

In search of a system capable of hosting, monitoring compiling. and testing code in an automated way, what can be recommended to the organization?

- A. Jenkins
- B. Ansible
- C. Perl
- D. Chef

Answer: A

NEW QUESTION 132

An external edge router provides connectivity from a service provider to an enterprise Which two Internet edge best practices meet compliance regulations'? (Choose two)

- A. Implement filterng to control traffic that is sourced from the infrastructure IP space.
- B. Enable and use only secure protocols.
- C. Send logs to a centralized logging collection server.
- D. Implement EBGP to advertise all owned IP blocks.
- E. Use login banners and interface access lists to restrict administrative access to the system

Answer: BE

NEW QUESTION 134

Company XYZ network runs IPv4 and IPv6 and they want to Introduce a multidomain, multicast-based network. The new design should use a flavor of PIM that forwards traffic using SPT. Which technology meets this requirement?

- A. PIM-DM
- B. PIM-SM
- C. PIM-SSM
- D. BIDIR-PIM

Answer: C

NEW QUESTION 139

What is a web-based model in which a third-party provider hosts applications that are available to customers over the Internet?

- A. PaaS
- B. SaaS
- C. IaaS
- D. WaaS

Answer: B

NEW QUESTION 142

When an SDN-based model is used to transmit multimedia traffic, which aspect should an architect consider while designing the network?

- A. QoE estimation
- B. security
- C. traffic patterns
- D. flow forwarding

Answer: A

NEW QUESTION 145

As a network designer you need to support an enterprise with hundreds of remote sites connected over a single WAN network that carries different types of traffic, including VoIP, video, and data applications which of following design considerations will not impact design decision?

- A. Focus on the solution instead of the problem, which helps to reduce downtime duration
- B. The location of the data collection
- C. What direction the data or flows should be metered
- D. Identify traffic types and top talkers over this link

Answer:

A

NEW QUESTION 147

Which two statements describe the usage of the IS-IS overload bit technique? (Choose two)

- A. If overload-bit is set on a Level 2 intermediate system, the other Level 2 intermediate systems in the topology will stop using the overloaded IS to forward Level 2 traffic. However, the intermediate system can still forward Level 1 traffic.
- B. It can be set in intermediate systems (IS-IS routers) to prioritize control plane CSNP packets.
- C. It can be used to automatically synchronize the link-state database between Level 1 intermediate systems.
- D. It can be set in intermediate systems (IS-IS routers) to avoid traffic black holes until routing protocols are fully converged after a reload operation.
- E. It can be set in intermediate systems (IS-IS routers) to attract transit traffic from other intermediate systems.

Answer: AD

NEW QUESTION 148

Which undesired effect of increasing the jitter compensation buffer is true?

- A. The overall transport jitter decreases and quality improves.
- B. The overall transport jitter increases and quality issues can occur.
- C. The overall transport delay increases and quality issues can occur.
- D. The overall transport delay decreases and quality improves.

Answer: C

NEW QUESTION 151

A business invests in SDN and develops its own SDN controller that, due to budget constraints, runs on a single controller. The controller actively places an exclusive lock on the configuration of the devices to ensure it is the only source of changes to the environment. What is the result if the controller fails?

- A. All device configurations are in read-only mode until the controller is restored.
- B. The control plane is unavailable until the controller is restored.
- C. If a device fails, the configuration backup is unavailable.
- D. Manual changes are only possible until the controller is restored.

Answer: B

NEW QUESTION 155

A network architect must redesign a service provider edge, where multiservice and multitenant PEs are currently present. Which design feature should be minimized in the new design to achieve reliability?

- A. bridging
- B. fate sharing
- C. redundancy
- D. unicast overlay routing

Answer: B

NEW QUESTION 157

Which two application requirements are mandatory for traffic to receive proper treatment when placed in the priority queue? (Choose two.)

- A. small transactions (HTTP-like behavior)
- B. WRED drop treatment
- C. tolerance to packet loss
- D. intolerance to jitter
- E. TCP-based application

Answer: AD

NEW QUESTION 158

Which design solution reduces the amount of IGMP state in the network?

- A. IGMP filtering
- B. IGMPv3 with PIM-SSM
- C. multiple multicast domains
- D. one multicast group address throughout the network regardless of IGMP version

Answer: A

NEW QUESTION 163

A customer migrates from a traditional Layer 2 data center network into a new SDN-based spine-and-leaf VXLAN EVPN data center within the same location. The networks are joined to enable host migration at Layer 2. Which activity should be completed each time a legacy network is migrated?

- A. The migrated VLAN should be pruned from the Layer 2 interconnects.
- B. The migrated network should have a VXLAN VNID configured within the new network.
- C. The migrated network should be advertised to the EVPN network as a Type 2 network.
- D. The migrated network should be added to the EVPN BGP routing.

Answer: C

NEW QUESTION 168

What is a description of a control plane action?

- A. de-encapsulating and re-encapsulating a packet in a data-link frame
- B. matching the destination MAC address of an Ethernet frame to the MAC address table
- C. matching the destination IP address of an IP packet to the IP routing table
- D. hosts locating routers that reside on attached links using the IPv6 Neighbor Discover Protocol

Answer: D

NEW QUESTION 173

Which function is performed at the access layer of the three-layer hierarchical network design model?

- A. fault isolation
- B. QoS classification and marking boundary
- C. reliability
- D. fast transport
- E. redundancy and load balancing

Answer: B

NEW QUESTION 174

A service provider hires you to design its new managed CE offering to meet these requirements

- The CEs cannot run a routing protocol with the PE
- Provide the ability for equal or unequal ingress load balancing in dual-homed CE scenarios.
- Provide support for IPv6 customer routes
- Scale up to 250.000 CE devices per customer.
- Provide low operational management to scale customer growth.
- Utilize low-end (inexpensive) routing platforms for CE functionality. Which tunneling technology do you recommend?

- A. FlexVPN
- B. point-to-point GRE
- C. DMVPN
- D. LISP

Answer: D

NEW QUESTION 177

Company XYZ is redesigning their QoS policy. Some of the applications used by the company are real-time applications. The QoS design must give these applications preference in terms of transmission. Which QoS strategy can be used to fulfill the requirement?

- A. weighted fair queuing
- B. weighted random early detection
- C. low-latency queuing
- D. first-in first-out

Answer: C

NEW QUESTION 178

Which design benefit of bridge assurance is true?

- A. It supposes a spanning-tree topology change upon connecting and disconnecting a station on a port
- B. It prevents switched traffic from traversing suboptimal paths on the network.
- C. It allows small, unmanaged switches to be plugged into ports of access switches without the risk of switch loops.
- D. It prevents switch loops caused by unidirectional point-to-point link condition on Rapid PVST + and MST

Answer: D

NEW QUESTION 179

An existing wireless network was designed to support data traffic only. You must now install context Aware services for location tracking changes must be applied to the existing wireless network to increase the location accuracy? (Chose two)

- A. Add access points along the perimeter of the coverage area.
- B. Increase the access point density to create an average inter-access point distance of less than 40 feet or 12.2 meters
- C. Use directional antennas to provide more cell overlapping
- D. Install additional access points in monitor mode where the co-channel interference would otherwise be affected
- E. Fine tune the radio configuration of the access point to have a higher average transmission power to achieve better coverage

Answer: BE

NEW QUESTION 182

Company XYZ has a multicast domain that spans across multiple autonomous systems. The company wants to choose a technology that provides simplified and controlled approach to interconnecting the multicast domains. Which technology is the best fit for this purpose?

- A. MSDP
- B. PIM SSM
- C. MPLS
- D. PIM sparse mode

Answer: A

NEW QUESTION 183

Which mechanism provides Layer 2 fault isolation between data centers?

- A. fabric path
- B. OTL
- C. advanced VPLS
- D. LISP
- E. TRILL

Answer: D

NEW QUESTION 185

A network architect in an enterprise is designing a network policy for certain database applications. The goal of the policy is to allow these applications to access the internet directly, whereas other user and network applications that communicate with systems or users outside their own network must be routed through the data center. The focus is on achieving higher availability and a better user experience for the database applications, but switching between different network paths based on performance characteristics must be supported.

Which solution meets these requirements?

- A. MPLS L3VPN with QoS
- B. Cloud onRamp for IaaS
- C. Cloud onRamp for SaaS
- D. MPLS direct connect

Answer: C

Explanation:

<https://www.cisco.com/c/en/us/solutions/collateral/enterprise-networks/sd-wan/nb-06-cloud-onramp-saas-faq-ct>

NEW QUESTION 189

Two routers R1 and R2 are directly connected through an Ethernet link. Both routers are running OSPF over the Ethernet link and OSPF has been registered with BFD. R1 has been set up to transmit BFD at a 50 ms interval, but R2 can receive only at a 100 ms rate due to platform limitations. What does this mean?

- A. After the initial timer exchange
- B. R2 sets its transmission rate to the R1 Desired Min TX interval
- C. After the initial timer exchange
- D. R1 sets its transmission rate to the R2 Required Min RX interval
- E. Timers renegotiate indefinitely, so the timer exchange phase never converges
- F. R2 sets the P-bit on all BFD control packets until R2 sends a packet with the F-bit set

Answer: B

NEW QUESTION 190

Company XYZ wants to secure the data plane of their network. Which two technologies can be included in the security design? (Choose two)

- A. DAI
- B. IP Source Guard
- C. BEEP
- D. CPPr
- E. MPP

Answer: AB

NEW QUESTION 191

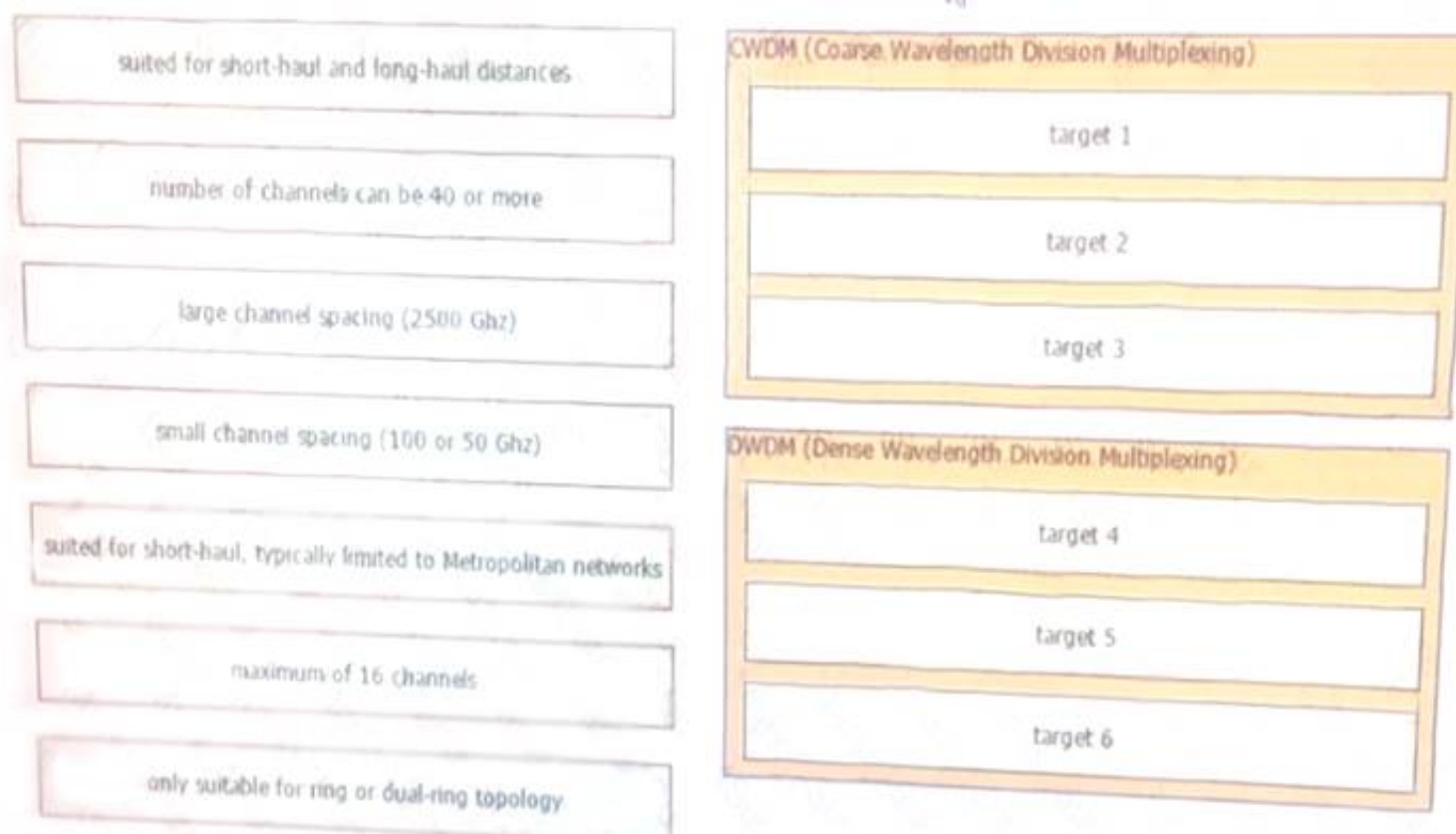
Which parameter is the most important factor to consider when deciding service placement in a cloud solution?

- A. data replication cost
- B. application structure
- C. security framework Implementation time
- D. data confidentiality rules

Answer: D

NEW QUESTION 194

Drag and drop the optical technology design characteristics on the left to the correct optical technologies on the right. Not all options are used



- A. Mastered
- B. Not Mastered

Answer: A

Explanation:

- 1 - target 4
- 2 - target 5
- 3 - target 1
- 4 - target 6
- 5 - target 2
- 6 - target 3

NEW QUESTION 198

Company XYZ must design a strategy to protect their routers from DoS attacks, such as traffic destined to the router's own route processor, using separate control plane categories. Which two capabilities can be used to achieve this requirement? (Choose two.)

- A. Control Plane Protection using queue thresholding on the transit subinterface
- B. Control Plane Protection using port filtering on the transit subinterface
- C. Control Plane Protection using port filtering on the main interface
- D. Control Plane Protection using queue thresholding on the host subinterface
- E. Control Plane Protection using port filtering on the host subinterface

Answer: DE

NEW QUESTION 200

Which two aspects are considered when designing a dual hub dual DMVPN cloud topology? (Choose two)

- A. will only work with single-tier headend architecture
- B. hub sites must connect to both DMVPN clouds
- C. recommended for high availability
- D. spoke-to-spoke traffic will transit the hub unless spokes exchange dynamic routing directly
- E. requires all sites to have dual Internet connections

Answer: AC

NEW QUESTION 203

Which technology is an open-source infrastructure automation tool that automates repetitive tasks for users who work in networks such as cloud provisioning and intraservice orchestration?

- A. Ansible
- B. Contrail
- C. Java
- D. Jinja2

Answer: A

NEW QUESTION 207

Company ABC wants to minimize the risk of users plugging unauthorized switches and hubs into the network. Which two features can be used on the LAN access ports to support this design requirement? (Choose two.)

- A. Loop Guard

- B. PortFast
- C. DTF
- D. Root Guard
- E. BPDU Guard

Answer: BE

NEW QUESTION 211

Which network management framework can be used to develop a network architecture that contains business requirements analysis, gap analysis, and network diagrams as artifacts to be used for design and implementation later?

- A. TOG
- B. ITIL
- C. FCAPS
- D. Cobit

Answer: C

NEW QUESTION 215

What are two common approaches to analyzing and designing networks? (Choose two.)

- A. bottom-up approach
- B. high-low security approach
- C. top-down approach
- D. left-right approach
- E. three-tier approach

Answer: AC

NEW QUESTION 216

You are designing the routing design for two merging companies that have overlapping IP address space. Which of these must you consider when developing the routing and NAT design?

- A. Local to global NAT translation is done after routing
- B. Global to local NAT translation is done before routing.
- C. Local to global NAT translation is done before policy-based routing
- D. Global to local NAT translation is done after policy-based routing.

Answer: B

NEW QUESTION 219

Customer XYZ network consists of an MPLS core. IS-IS running as IGP a pair of BGP route reflectors for route propagation, and a few dozens of MPLS-TE tunnels for specific tactical traffic engineering requirements. The customer's engineering department has some questions about the use of the Overload Bit in the IS-IS networks and how it could be used to improve their current network design. Which two concepts about the Overload Bit are true? (Choose two.)

- A. It can be set on a router during the startup process for a fixed period of time
- B. Networks advertised within the LSPs of the respective node will become unreachable
- C. It forces the midpoint MPLS-TE node to reoptimize the primary tunnels going through the OL node.
- D. It can be set on a router until other interacting protocols have signaled convergence.
- E. It is not recommended on BGP Route Reflectors

Answer: AD

NEW QUESTION 221

Which two features describe controller-based networking solutions compared to traditional networking solutions? (Choose two.)

- A. inflate licensing costs
- B. reduce network configuration complexity
- C. provide centralization of primary IT functions
- D. allow for fewer network failures
- E. increase network bandwidth usage

Answer: BC

NEW QUESTION 226

An enterprise campus is adopting a network virtualization design solution with these requirements

- It must include the ability to virtualize the data plane and control plane by using VLANs and VRFs
- It must maintain end-to-end logical path transport separation across the network
- resources available grouped at the access edge

Which two primary models can this network virtualization design be categorized? (Choose two)

- A. Path isolation
- B. Session isolation
- C. Group virtualization
- D. Services virtualization
- E. Edge isolation

Answer: AD

NEW QUESTION 227

A legacy enterprise is using a Service Provider MPLS network to connect its head office and branches. Recently, they added a new branch to their network. Due to physical security concerns, they want to extend their existing IP CCTV network of the head office to the new branch, without any routing changes in the network. They are also under some time constraints. What is the best approach to extend the existing IP CCTV network to the new branch, without incurring any IP address changes?

- A. L2TPv3
- B. VXLAN
- C. EoMPLS

Answer: B

NEW QUESTION 231

Which two conditions must be met for EIGRP to maintain an alternate loop-free path to a remote network? (Choose two.)

- A. The Reported Distance from a successor is lower than the local Feasible Distance.
- B. The Reported Distance from a successor is higher than the local Feasible Distance.
- C. The feasibility condition does not need to be met.
- D. The Feasible Distance from a successor is lower than the local Reported Distance.
- E. A feasible successor must be present.

Answer: AE

NEW QUESTION 234

Which optimal use of interface dampening on a fast convergence network design is true?

- A. When occasional flaps of long duration occur
- B. when numerous adjacent flaps of very short duration occur
- C. when the router hardware is slower than the carrier delay down detection
- D. when the switch hardware is faster than the debounce timer down detection

Answer: B

NEW QUESTION 236

How many fully established neighbour relationships exist on an Ethernet with five routers running OSPF as network type broadcast?

- A. 5
- B. 6
- C. 7
- D. 10
- E. 20

Answer: C

Explanation:

Assuming routers R1-R5, R1 is elected DR, R2 BDR. Fully established neighborships only occur to DR and BDR, all other neighbors are in 2Way DR other state.
DR|BDRFull relationships:
R2-R1 R3-R1 R3-R2 R4-R1 R4-R2 R5-R1
R5-R2

NEW QUESTION 237

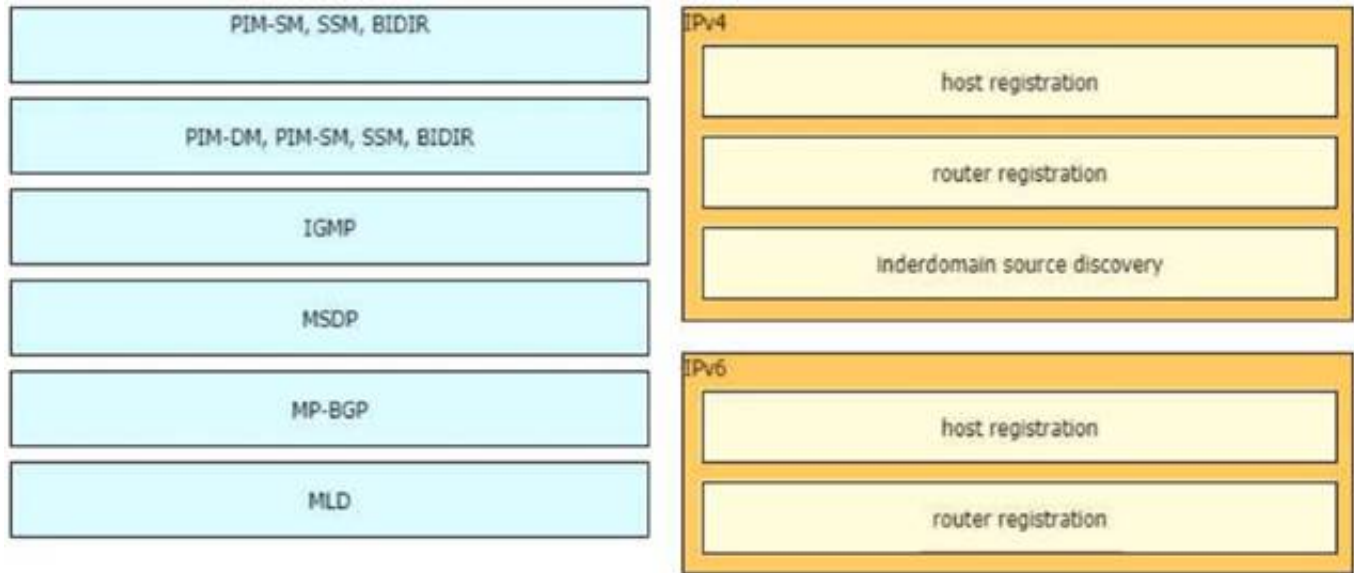
Company XYZ was not satisfied with the reconvergence time OSPF is taking. BFD was implemented to try to reduce the reconvergence time, but the network is still experiencing delays when having to reconverge. Which technology will improve the design?

- A. BFDecho
- B. Change the protocol to BGP
- C. Change the OSPF hello and dead intervals

Answer: B

NEW QUESTION 240

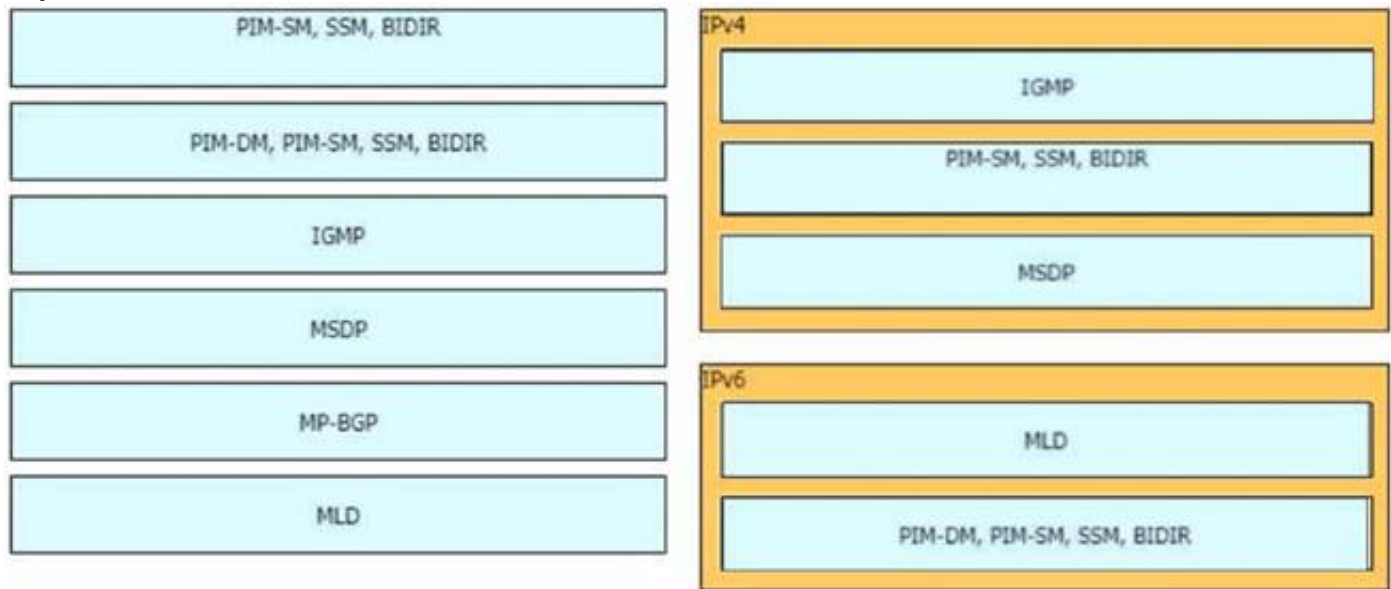
Drag and drop the multicast protocols from the left onto the current design situation on the right.



- A. Mastered
- B. Not Mastered

Answer: A

Explanation:



NEW QUESTION 242

An enterprise wants to provide low-cost delivery of network systems that can be scaled on business demand, followed by an initiative to reduce capital expenses for new IT equipment. Which technology meets these goals'?

- A. IaaS within a private cloud
- B. IaaS within an on-premises location
- C. PaaS within a public cloud
- D. SaaS within an on-premises location

Answer: C

NEW QUESTION 243

An enterprise solution team is performing an analysis of multilayer architecture and multicontroller SDN solutions for multisite deployments. The analysis focuses on the ability to run tasks on any controller via a standardized interface. Which requirement addresses this ability on a multicontroller platform?

- A. Deploy a root controller to gather a complete network-level view.
- B. Use the East-West API to facilitate replication between controllers within a cluster.
- C. Build direct physical connectivity between different controllers.
- D. Use OpenFlow to implement and adapt new protocols.

Answer: D

NEW QUESTION 245

Which two features control multicast traffic in a VLAN environment? (Choose two)

- A. IGMP snooping
- B. MLD snooping
- C. RGMP
- D. PIM snooping
- E. pruning

Answer: AB

NEW QUESTION 246

The Layer 3 control plane is the intelligence over the network that steers traffic toward its intended destination. Which two techniques can be used in service

provider-style networks to offer a more dynamic, flexible, controlled, and secure control plane design? (Choose two.)

- A. access control lists
- B. firewalls
- C. QoS policy propagation with BGP
- D. remote black-holing trigger
- E. prefix lists

Answer: DE

NEW QUESTION 248

Company XYZ has a hub-and-spoke topology over an SP-managed infrastructure. To measure traffic performance metrics, they implemented IP SLA senders on all spoke CE routers and an IP SLA responder on the hub CE router. What must they monitor to have visibility on the potential performance impact due to the constantly increasing number of spoke sites?

- A. CPU and memory usage on the spoke routers
- B. memory usage on the hub router
- C. CPU usage on the hub router
- D. interface buffers on the hub and spoke routers

Answer: C

NEW QUESTION 252

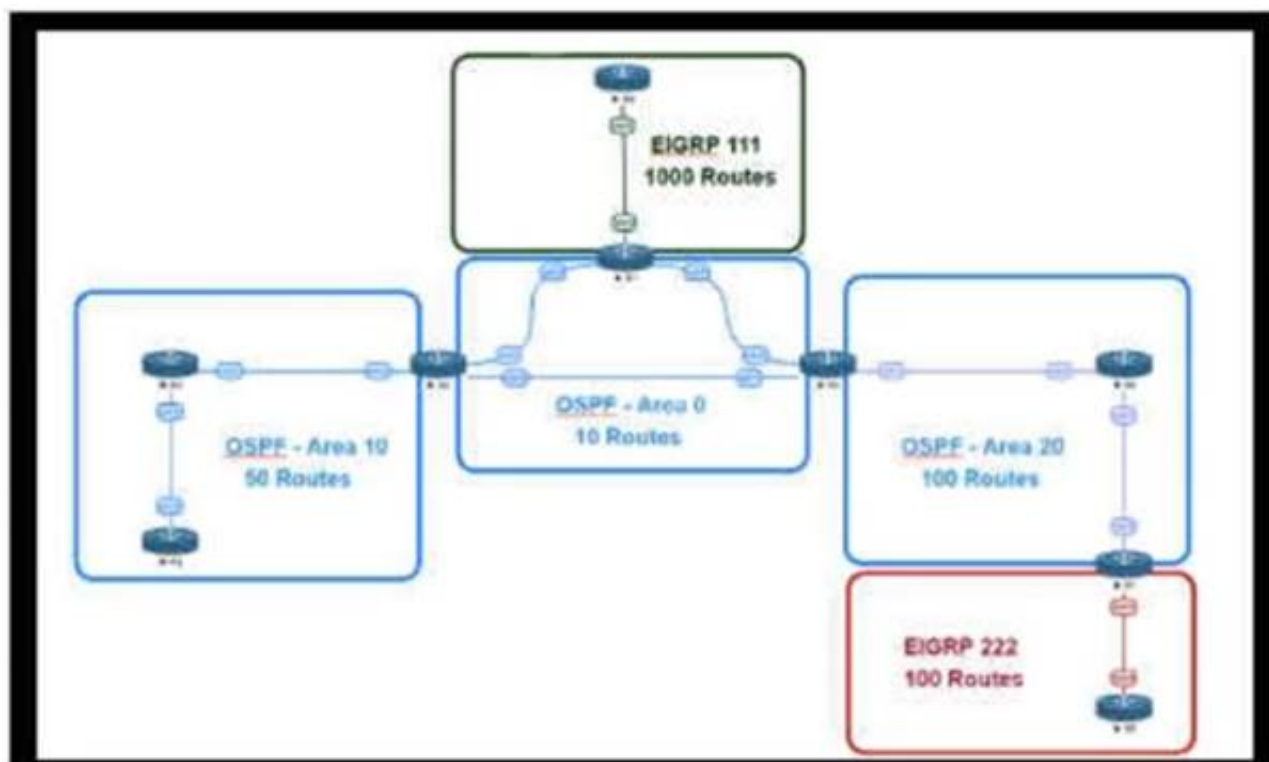
Company XYZ has implemented policy-based routing in their network. Which potential problem must be kept in mind about network reconvergence and PBR?

- A. It can limit network scalability
- B. It can create microloops during reconvergence
- C. It increases convergence time.
- D. It reduces convergence time.

Answer: B

NEW QUESTION 254

Refer to the exhibit.



An engineer is designing a multiarea OSPF network for a client who also has a large EIGRP domain. EIGRP routes are getting redistributed into OSPF. OSPF area 20 has routers with limited memory and CPU resources. The engineer wants to block routes from EIGRP 111 from propagating into area 20 and allow EIGRP 222 routes to. How in which OSPF area type fulfills this design requirement?

- A. area 20 as a stub area
- B. type 5 LSA filtering on the ASBR between EIGRP 111 and area 0
- C. area 20 as a NSSA area
- D. type 3 LSA filtering on the ABR between area 0 area 20

Answer: C

NEW QUESTION 257

Agile and Waterfall are two popular methods for organizing projects. What describes any Agile network design development process?

- A. working design over comprehensive documentation
- B. contract negotiation over customer collaboration
- C. following a plan over responding to change
- D. processes and tools over individuals and interactions over time

Answer: A

NEW QUESTION 262

Which two mechanisms avoid suboptimal routing in a network with dynamic mutual redistribution between multiple OSPFv2 and EIGRP boundaries? (Choose two.)

- A. AD manipulation
- B. matching OSPF external routes
- C. route tagging
- D. route tagging
- E. route filtering
- F. matching EIGRP process ID

Answer: DE

Explanation:

<https://www.cisco.com/c/en/us/support/docs/ip/enhanced-interior-gateway-routing-protocol-eigrp/8606-redist.ht>

NEW QUESTION 264

A company plans to use BFD between its routers to detect a connectivity problem inside the switched network. An IPS is transparently installed between the switches. Which packets should the IPS forward for BFD to work under all circumstances?

- A. Fragmented packet with the do-not-fragment bit set
- B. IP packets with broadcast IP source addresses
- C. IP packets with the multicast IP source address
- D. IP packet with the multicast IP destination address
- E. IP packets with identical source and destination IP addresses
- F. IP packets with the destination IP address 0.0.0.0.

Answer: E

NEW QUESTION 267

As network designer, which option is your main concern with regards to virtualizing multiple network zones into a single hardware device?

- A. Fate sharing
- B. CPU resource allocation
- C. Congestion control
- D. Security
- E. Bandwidth allocation

Answer: A

NEW QUESTION 272

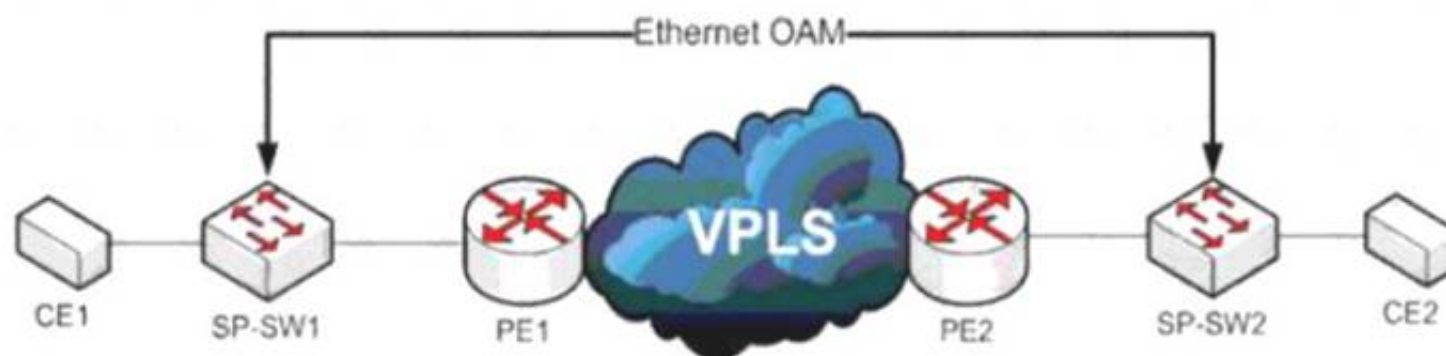
Which two foundational aspects of IoT are still evolving and being worked on by the industry at large? (Choose two)

- A. WiFi protocols
- B. Regulatory domains
- C. Low energy Bluetooth sensors
- D. IoT consortia
- E. Standards

Answer: AC

NEW QUESTION 275

Refer to the exhibit



A service provider has a requirement to use Ethernet OAM to detect end-to-end connectivity failures between SP-SW1 and SP-SW2. Which two ways to design this solution are true? (Choose two)

- A. Enable unicast heartbeat messages to be periodically exchanged between MEPs
- B. Enable Connectivity Fault Management on the SP switches
- C. Use upward maintenance endpoints on the SP switches
- D. Forward E-LMI PDUs over VPLS
- E. Forward LLD PDUs over the VPLS

Answer: BC

NEW QUESTION 278

Company XYZ is running BGP as their routing protocol. An external design consultant recommends that TCP path MTU discovery be enabled. Which effect will this have on the network?

- A. It will enhance the performance of TCP-based applications.
- B. It will increase the convergence time.
- C. It will improve the convergence time.
- D. It will create a loop free path.

Answer: A

NEW QUESTION 279

Which three Cisco products are used in conjunction with Red Hat to provide an NFVi solution? (Choose three.)

- A. Cisco Prime Service Catalog
- B. Cisco Open Virtual Switch
- C. Cisco Nexus switches
- D. Cisco UCS
- E. Cisco Open Container Platform
- F. Cisco Virtual Network Function

Answer: CDF

NEW QUESTION 281

Router R1 is a BGP speaker with one peering neighbor over link "A". When the R1 link/interface "A" fails, routing announcements are terminated, which results in the tearing down of the state for all BGP routes at each end of the link. What is this a good example of?

- A. fault isolation
- B. resiliency
- C. redundancy
- D. fate sharing

Answer: D

NEW QUESTION 282

An enterprise organization currently provides WAN connectivity to their branch sites using MPLS technology, and the enterprise network team is considering rolling out SD-WAN services for all sites.

With regards to the deployment planning, drag and drop the actions from the left onto the corresponding steps on the right.

Select deployment models between virtual server software and hardware-based SD-WAN appliances.	step 1
Conduct a pilot test to observe and record unexpected issues.	step 2
Make an assessment of running protocols and application usage in the network.	step 3
Evaluate existing circuits and performance to get details of connectivity cost and reliability.	step 4
Layout transport plan based on business prioritizes traffic and the unique bandwidth requirements of each specific application.	step 5
Understand the traffic monitoring requirements and capabilities.	step 6

- A. Mastered
- B. Not Mastered

Answer: A

Explanation:

Table Description automatically generated with medium confidence

NEW QUESTION 285

Company XYZ is designing the network for IPv6 security and they have these design requirements:

- > A switch or router must deny access to traffic from sources with addresses that are correct, but are topologically incorrect
- > Devices must block Neighbor Discovery Protocol resolution for destination addresses that are not found in the binding table.

Which two IPv4 security features are recommended for this company? (Choose two)

- A. IPv6 DHCP Guard
- B. IPv6 Source Guard
- C. IPv6 Destination Guard
- D. IPv6 Prefix Guard

E. IPv6 RA Guard

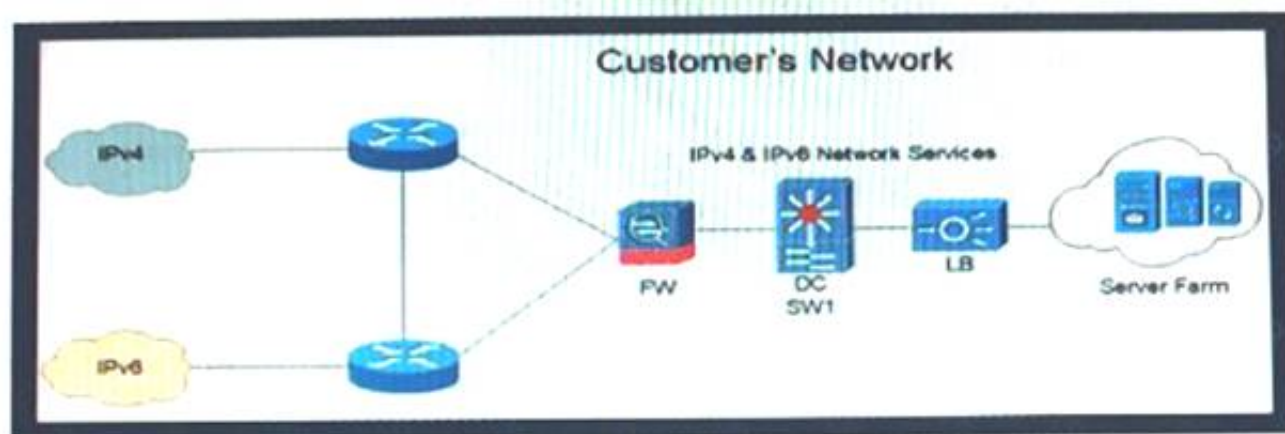
Answer: CD

Explanation:

https://www.cisco.com/c/dam/global/ja_jp/td/docs/ios-xml/ios/ipv6_fhsec/configuration/xe-16/ip6f-xe-16-book.

NEW QUESTION 290

Refer to the exhibit.



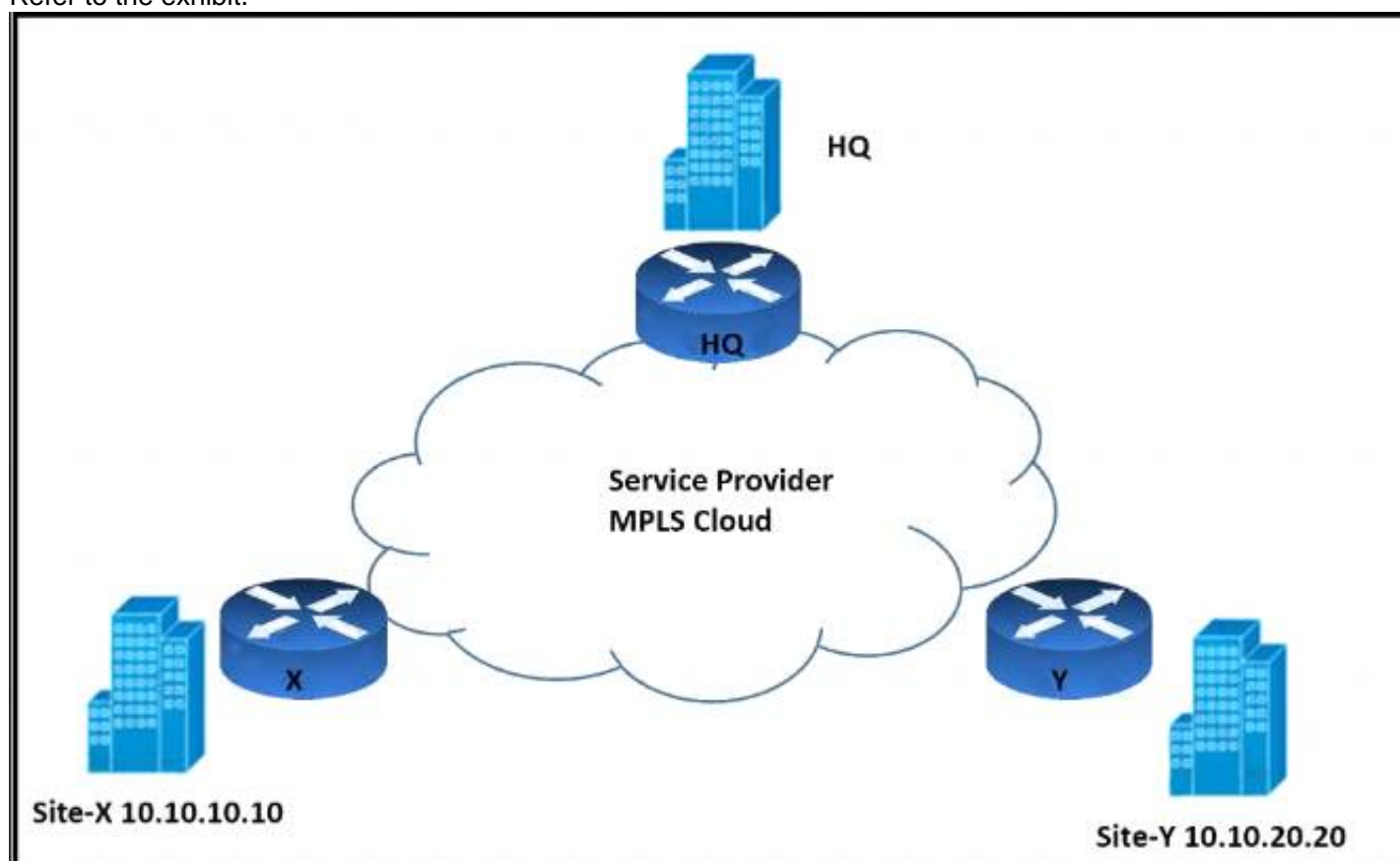
Company XYZ is currently running IPv4 but has decided to start the transition into IPv6. The initial objective is to allow communication based on IPv6 wherever possible, and there should still be support in place for devices that only support IPv4. These devices must be able to communicate to IPv6 devices as well. Which solution must be part of the design?

- A. address family translation
- B. dual stack
- C. host-to-host tunneling
- D. 6rd tunneling

Answer: B

NEW QUESTION 292

Refer to the exhibit.



An architect must design an enterprise WAN that connects the headquarters with 22 branch offices. The number of remote sites is expected to triple in the next three years. The final solution must comply with these requirements:

- Only the loopback address of each of the enterprise CE X and Y routers must be advertised to the interconnecting service provider cloud network.
- The transport layer must carry the VPNv4 label and VPN payload over the MP-BGP control plane.
- The transport layer must not be under service provider control.

Which enterprise WAN transport virtualization technique meets the requirements?

- A. EIGRP Over the Top
- B. MPLS over BGP over multipoint GRE
- C. DMVPN per VRF
- D. point-to-point GRE per VRF

Answer: B

NEW QUESTION 294

Drag and drop the design use cases from the left onto the correct uRPF techniques used to prevent spoofing attacks Not all options are used.

to check whether a route to a given IP address exists without regard to its incoming interface	strict mode
to filter Bogon IP addresses	feasible mode
to ensure the incoming interface is the best reverse path to a given IP address	loose mode
when there are alternate routes to a given IP address	

- A. Mastered
 B. Not Mastered

Answer: A

Explanation:

to check whether a route to a given IP address exists without regard to its incoming interface	to ensure the incoming interface is the best reverse path to a given IP address
to filter Bogon IP addresses	when there are alternate routes to a given IP address
to ensure the incoming interface is the best reverse path to a given IP address	to filter Bogon IP addresses
when there are alternate routes to a given IP address	

NEW QUESTION 299

A service provider recently migrated to an SD-WAN solution for delivering WAN connections to its customers. One of the main challenges with the SD-WAN deployment is that branch site volume increases every year, which causes management complexity. Which action resolves the issue?

- A. Implement a scalable network management system to manage all sites.
 B. Adopt a well-structured SD-WAN service management lifecycle model
 C. Build a service orchestration platform on top of the network controller
 D. Set up a dedicated team to monitor and provision new customers

Answer: C

NEW QUESTION 303

What advantage of placing the IS-IS layer 2 flooding domain boundary at the core Layer in a three-layer hierarchical network is true?

- A. The Layer 1 and Layer 2 domains can easily overlap
 B. It reduces the complexity of the Layer 1 domains
 C. It can be applied to any kind of topology
 D. The Layer 2 domain is contained and more stable

Answer: D

NEW QUESTION 305

An enterprise requires MPLS connected branches to access cloud-based Microsoft 365 services over an SD-WAN solution. Internet access is available only at dual regional hub sites that are connected to the MPLS network. Which connectivity method provides an optimum access method to the cloud-based services if one ISP suffers loss or latency?

- A. Cloud onRamp gateway site
 B. Cloud onRamp SWG
 C. Cloud onRamp
 D. Cloud onRamp SaaS

Answer: D

Explanation:

<https://www.cisco.com/c/en/us/td/docs/routers/sdwan/configuration/cloudonramp/vedge-20-x/cloud-onramp-boo>

NEW QUESTION 307

A BGP route reflector in the network is taking longer than expected to coverage during large network changes. Troubleshooting shows that the router cannot

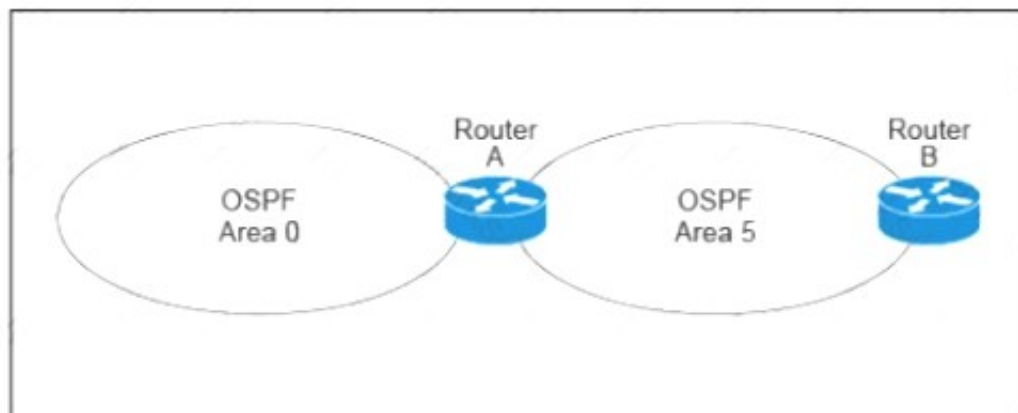
handle all the TCP acknowledgements during route updates. Which action can be performed to tune the device performance?

- A. Increase the size of the hold queue.
- B. Increase the size of the large buffers.
- C. Decrease the size of the small buffers.
- D. Increase the keepalive timers for each BGP neighbor.

Answer: A

NEW QUESTION 310

Refer to the exhibit.



A customer runs OSPF with Area 5 between its aggregation router and an internal router. When a network change occurs in the backbone, Area 5 starts having connectivity issues due to the SPF algorithm recalculating an abnormal number of times in Area 5. You are tasked to redesign this network to increase resiliency on the customer network with the caveat that Router B does not support the stub area. How can you accomplish this task*?

- A. Increase the bandwidth on the connection between Router A and Router B
- B. Implement LSA filtering on the ABR, allowing summary routes and preventing more specific routes into Area 5
- C. Create a virtual link to Area 0 from Router B to the ABR
- D. Turn on LSA throttling on all devices in Area 5
- E. Set Area 5 to stubby at the ABR anyway

Answer: B

NEW QUESTION 315

Company XYZ is designing the IS-IS deployment strategy for their multiarea IS-IS domain. They want IS-IS neighbour relationships to be minimized on each network segment and want to optimize the size of the IS-IS LSDB on each router. Which design can be used to meet these requirements?

- A. Design all routers as Level 2 router
- B. Set the links between the routers as Level 1 with the area
- C. Design the network so that the routers connecting to other areas are Level 2 routers and internal routers are Level 1
- D. Design the network so that all routers are Level 1 routers
- E. Design the network so that the routers connecting to other areas are Level 1/Level 2 routers and internal routers are Level 1

Answer: D

NEW QUESTION 319

.....

THANKS FOR TRYING THE DEMO OF OUR PRODUCT

Visit Our Site to Purchase the Full Set of Actual 400-007 Exam Questions With Answers.

We Also Provide Practice Exam Software That Simulates Real Exam Environment And Has Many Self-Assessment Features. Order the 400-007 Product From:

<https://www.2passeasy.com/dumps/400-007/>

Money Back Guarantee

400-007 Practice Exam Features:

- * 400-007 Questions and Answers Updated Frequently
- * 400-007 Practice Questions Verified by Expert Senior Certified Staff
- * 400-007 Most Realistic Questions that Guarantee you a Pass on Your FirstTry
- * 400-007 Practice Test Questions in Multiple Choice Formats and Updatesfor 1 Year